

# Stormwater Management Program Plan



Prepared for:

Village of Harwood Heights

7300 W. Wilson Ave.

Harwood Heights, IL 60706

## **EXECUTIVE SUMMARY**

The Village of Harwood Heights (Village) is an operator of a Municipal Separate Storm Sewer System (MS4) as defined by the Illinois Environmental Protection Agency's (IEPA) National Pollution Discharge Elimination System (NPDES) Phase II program. The Village has applied for and obtained coverage under the IEPA's General NPDES Permit for Discharges from Small Municipal Separate Storm Sewer Systems. Their permit number is ILR40-00208 and a copy of the general permit is provided in Appendix 9.

A central requirement of the NPDES Phase II Permit is the development and implementation of a program to reduce or prevent the meet the conditions and provisions of the ILR40 permit. To meet these requirements, the Village has developed this Stormwater Management Program Plan (SMPP) to detail the policies, plans and procedures in place to meet the conditions and requirements of the permit and serve as a resource for the implementation, interpretation and documentation of the Village's entire MS4 program. The SMPP encompasses all aspects of the Village's NPDES Phase II program and specifically addresses the following six minimum control measures in such manners:

1. **Public Education** – The Village will continue to produce and make available brochures on topics related to stormwater quality. These topics include steps the public can take to reduce pollutants to stormwater runoff or the impacts of stormwater runoff on local water bodies. Specifically, the Village distributes education materials relating to lawn sprinkling requirements. The goal of this program is to provide residents and businesses education information on the impacts of storm water discharges on local water bodies, the steps that the public can take to reduce pollutants in storm water discharge, and the hazards associated with illegal discharges and improper waste disposal.
2. **Public Participation and Involvement** – The Village holds public hearing to discuss topics including steps the public can take to reduce pollutants to stormwater runoff. The goal of the public hearing is to increase public education and involvement regarding the Village's stormwater management and ongoing NPDES Phase II program. The Village also posts the Village Hall phone number for volunteers to ensure all storm-related questions/complaints are answered.
3. **Illicit Discharge Detection and Elimination** – The Village performs activities related to the Illicit Discharge Detection and Elimination minimum control as a vital part of their MS4 program. Specifically, the Village prepared a storm sewer map that shows the location of all outfalls to receiving storm sewer systems. The Village annually updates the map to reflect new development or changes to the system. Th Village annually reviews its' ordinance language and revises as needed. All new ordinance provisions are then adopted and enforced. The Village has developed procedures to address the reporting and elimination of illicit discharges. All Village employees are educated on these policies and procedures. The Village has procedures for requiring the removal of illicit discharges identified through the illicit discharge tracing program. The Village's program includes photos and documentation for all outfall locations compiled in an IDDE report. The citizens of the West Central Municipal Conference are notified on the hazardous waste disposal procedures.

4. **Construction Site Runoff Control** – The Village performs activities and services related to the Construction Site Runoff Control measure as part of their MS4 program. Specifically, the Village utilizes their regulatory control program as well as the regulations outlined in the MWRDGC Watershed Management Ordinance to regulate runoff from construction sites. The Village operates under the jurisdiction of MWRDGC where soil erosion and sediment control measures are required to reduce pollutants in storm water runoff from construction activities, an erosion and sediment control plan is required, site plan review that considers water quality, site inspection and enforcement of control measures, and sanctions to ensure compliance. The Village has also developed and implemented procedures for site plan review and site inspection and enforcement of control measures that consider water quality as part of the permitting process. The review and inspection procedures are documented by the Village's consulting engineer. All inspectors are educated on the proper site inspection techniques.
5. **Post Construction Site Runoff Control** – The Village in accordance with MWRDGC WMO guidelines has procedures in place requiring the identification and responsible entity for long term maintenance of post construction BMPs required for development and an ordinance in place to ensure the preservation of natural features on development sites including the preservation of depressional storage. The Village under MWRDGC, addresses volume and quality control for storm water runoff from finished development projects. It specifically requires controls to prevent or minimize water quality impacts, implementation of structural and non-structural BMPs, provisions for long-term operation and maintenance, pre-construction review by the Village of the site development plan, site inspections during construction, and post-construction inspections.
6. **Pollution Prevention and Good Housekeeping** – This minimum control measure involves the development and implementation of an operation and maintenance program to reduce the discharge of pollutants from municipal operations. The Village performs activities related to pollution prevention and good housekeeping as a part of their overall NPDES program. The goal of the program is to address activities such as park and open space maintenance, operation of storage yards, snow disposal, new construction and land disturbances, storm water system maintenance procedures for proper disposal of street cleaning debris and catch basin materials, and ways that flood management projects impact water quality, nonpoint source pollution control, and aquatic habitat. This program addresses the hazards associated with illegal discharges and improper disposal of waste. The Village regularly updates and modifies the training as needed to meet the requirements of the NPDES program.

The Village also has an inspection and maintenance program that is designed to reduce pollutant runoff from municipal operations. The Village performs catch basin cleaning and street sweeping activities with a vacuum street sweeper. The Village also maintains a small number of detention basins by mowing the basins, removing garbage and clearing spillways, inlets and outlets periodically. This maintenance program is evaluated and updated as needed on an annual basis to determine its effectiveness in reducing pollutant runoff.

The Village also has many operational policies designed to prevent storm water pollution associated with municipal operations. Road salt is stored on a paved surface and covered to protect it from precipitation. The Village stores diesel fuel and gasoline for its vehicles in tanks with vault containment below them. Flammable and hazardous chemicals are stored in metal cabinets. Used vehicle oil is stored in a holding tank and periodically hauled away by a waste disposal service. Catch basin and street sweeping wastes are hauled to the Village's garbage collection service for disposal. Maintenance and washing of the Village's public works vehicles is performed in the public works garage or similar facility. The existing policies described above will be continued. Policies regarding storage of municipal construction and street sweeping wastes, and spill prevention and clean-up procedures are also included in the program. These programs will be evaluated on a regular basis to determine its effectiveness and modified as necessary to meet the requirements of the NPDES program.

This SMPP details all of the Best Management Practices (BMPs), activities, policies, and procedures the Village of Harwood Heights employs to protect water quality by reducing or preventing the introduction of contaminants into the municipal separate storm sewer system and to meet the requirements of their MS4 permit.

The SMPP is a living document that will be updated regularly based on changes within the Village and the NPDES regulations. If fully utilized, the SMPP provides the Village with a vital tool to meet the following goals of this program:

- Improve water quality,
- Provide cleaner and more aesthetically pleasing local waterbodies and streams,
- Enhance recreation opportunities
- Healthier environment for residents and wildlife.

The SMPP will be reviewed annually during the Village's Annual Facility Inspection as required by the NPDES Phase II Permit and will be kept onsite at 7300 W. Wilson Avenue, Harwood Heights, Cook County, IL 60706.



## **LIST OF APPENDICES**

1. Village of Harwood Heights Village Boundary and Street Map
2. Village of Harwood Heights Storm Sewer Atlas
3. Sub-Watershed Exhibits (Lower Branch Chicago River Watershed & Bensenville Ditch-Des Plaines River Watershed)
4. Watershed Exhibits (Chicago River Watershed & Des Plaines River Watershed)
5. Major Watersheds of Illinois Map
6. Illinois River Watershed Map
7. Village of Harwood Heights 2019 Notice of Intent
8. Village of Harwood Heights Annual Facility Inspection Reports Years 13-18
9. IEPA General NPDES Permit No. ILR40
10. Critical Trends in Illinois Ecosystems – Chapter Five: Fox and Des Plaines Rivers Watershed (2001)
11. Sample Inspection Forms: ILR40 and ILR10
12. Sample Contractor Certification Forms
13. IEPA Forms – NOI, ION, and NOT
14. Outfall Screening Checklist, Forms, Instructions, and Reports
15. Sample Inspection Checklists
16. Typical Soil Erosion and Sediment Control Details
17. Example Public Education and Outreach Materials
18. Construction Site Inspection Forms
19. Outfall Inspection Data Forms and Reports
20. Detention Pond Checklists
21. Pre-Construction Meeting Forms
22. Employee Training Agendas or Course Information

- 23. Compliance Documentation – Public Education and Outreach**
- 24. Compliance Documentation – Public Participation and Involvement**
- 25. Compliance Documentation – Illicit Discharge Detection Elimination System**
- 26. Compliance Documentation – Construction Site Runoff Control**
- 27. Compliance Documentation – Post-Construction Runoff Control**
- 28. Compliance Documentation – Pollution Prevention/Good Housekeeping**

## **APPENDIX 1**

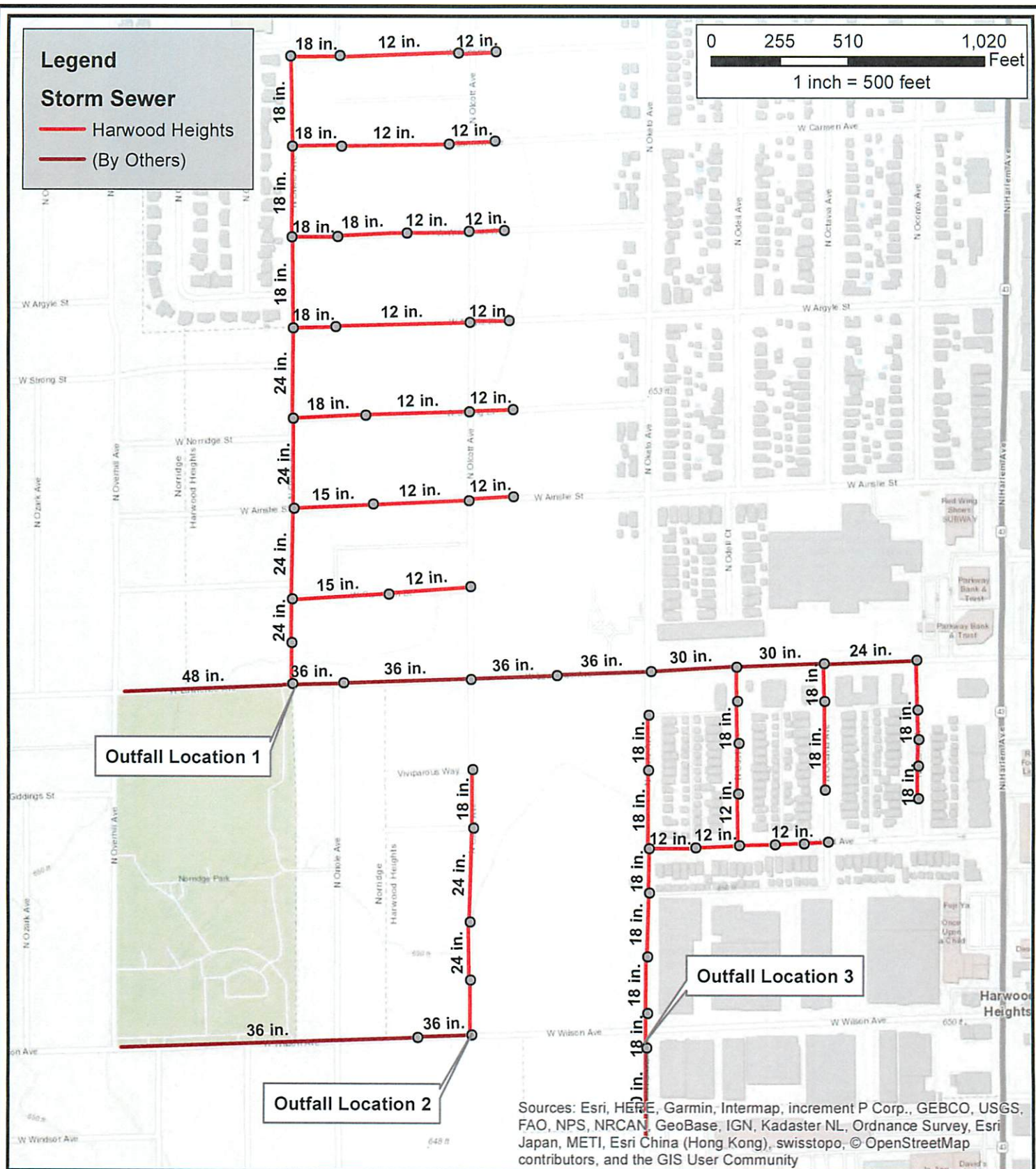
### **Village of Harwood Heights Village Boundary and Street Map**

## Legend

### Storm Sewer

- Harwood Heights
- (By Others)

0 255 510 1,020 Feet  
1 inch = 500 feet



DSGN. BMK CHKD.

CLIENT VILLAGE OF  
HARWOOD HEIGHTS

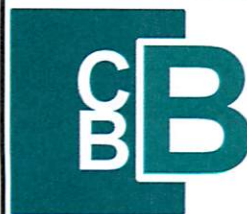
JOB#



TITLE  
VILLAGE OF HARWOOD HEIGHTS  
STORM SEWER MAP

DATE  
01/18/19

EXHIBIT



Christopher B. Burke Engineering, Ltd.  
9575 West Higgins Road, Suite 600  
Rosemont, IL 60018  
(847) 823-0500 / FAX (847) 823-0520

## **APPENDIX 2**

### **Village of Harwood Heights Storm Sewer Atlas**



□

Sources: Esri, HERE, Garmin, Intermap, increment P Corp., GEBCO, USGS, FAO, NPS, NRCAN, Geobase, IGN, Kadaster NL, Ordnance Survey, Esri Japan, METI, Esri China (Hong Kong), swisstopo, © OpenStreetMap contributors, and the GIS User Community



Feet

1 inch = 1,250 feet

DSGN.	BMK	CHKD.
-------	-----	-------

BMK CHKD.

CHKD.

DATE \_\_\_\_\_

VILLAGE OF HARWOOD HEIGHTS  
STREET MAP

EXHIBIT

Sources: Esri, HERE, Garmin, Intermap, increment P Corp., GEBCO, USGS, FAO, NPS, NRCAN, Geobase, IGN, Kadaster NL, Ordnance Survey, Esri Japan, METI, Esri China (Hong Kong), swisstopo, © OpenStreetMap contributors, and the GIS User Community



Christopher B. Burke Engineering, Ltd.  
9575 West Higgins Road, Suite 600  
Rosemont, IL 60018  
(847) 823-0500 / FAX (847) 823-0520

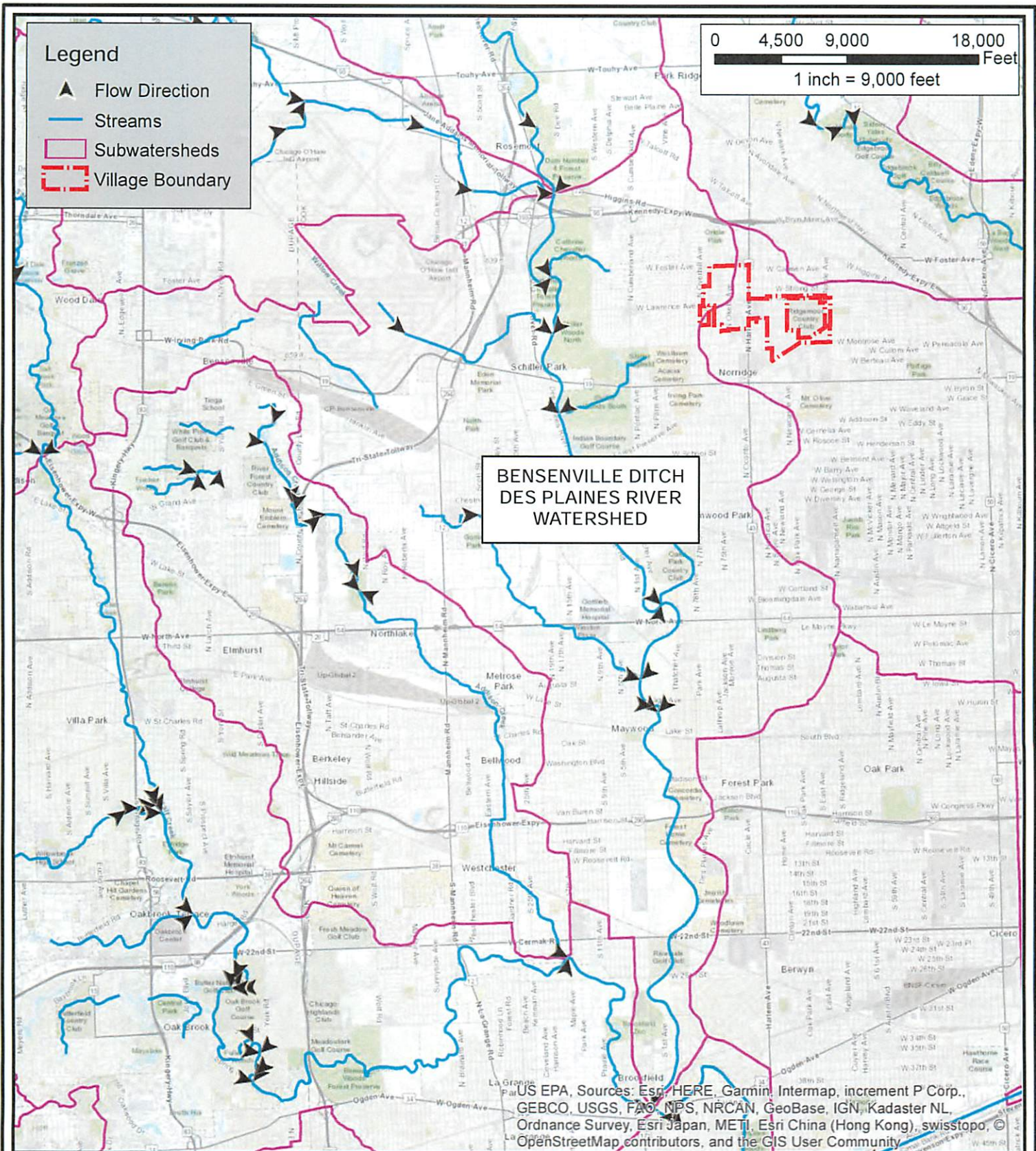
## **APPENDIX 3**

**Sub-Watershed Exhibits  
(Lower Branch Chicago River Watershed &  
Bensenville Ditch – Des Plaines River Watershed)**









Christopher B. Burke Engineering, Ltd.  
9575 West Higgins Road, Suite 600  
Rosemont, IL 60018  
(847) 823-0500 / FAX (847) 823-0520

CLIENT VILLAGE OF  
HARWOOD HEIGHTS

TITLE BENSENVILLE DITCH -  
DES PLAINES RIVER  
WATERSHED MAP

DSGN. BMK CHKD.

JOB#



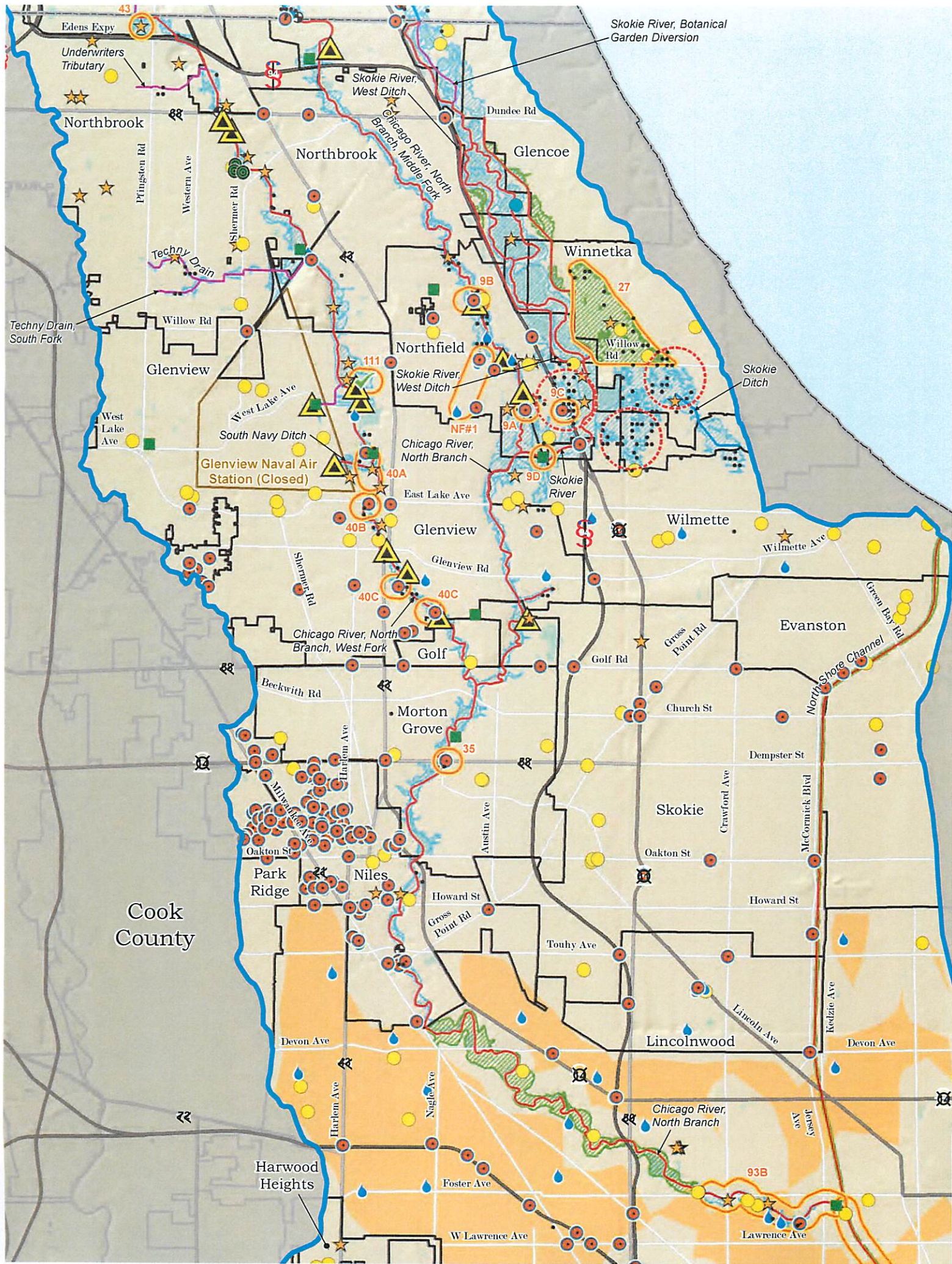
DATE  
01/18/19

EXHIBIT

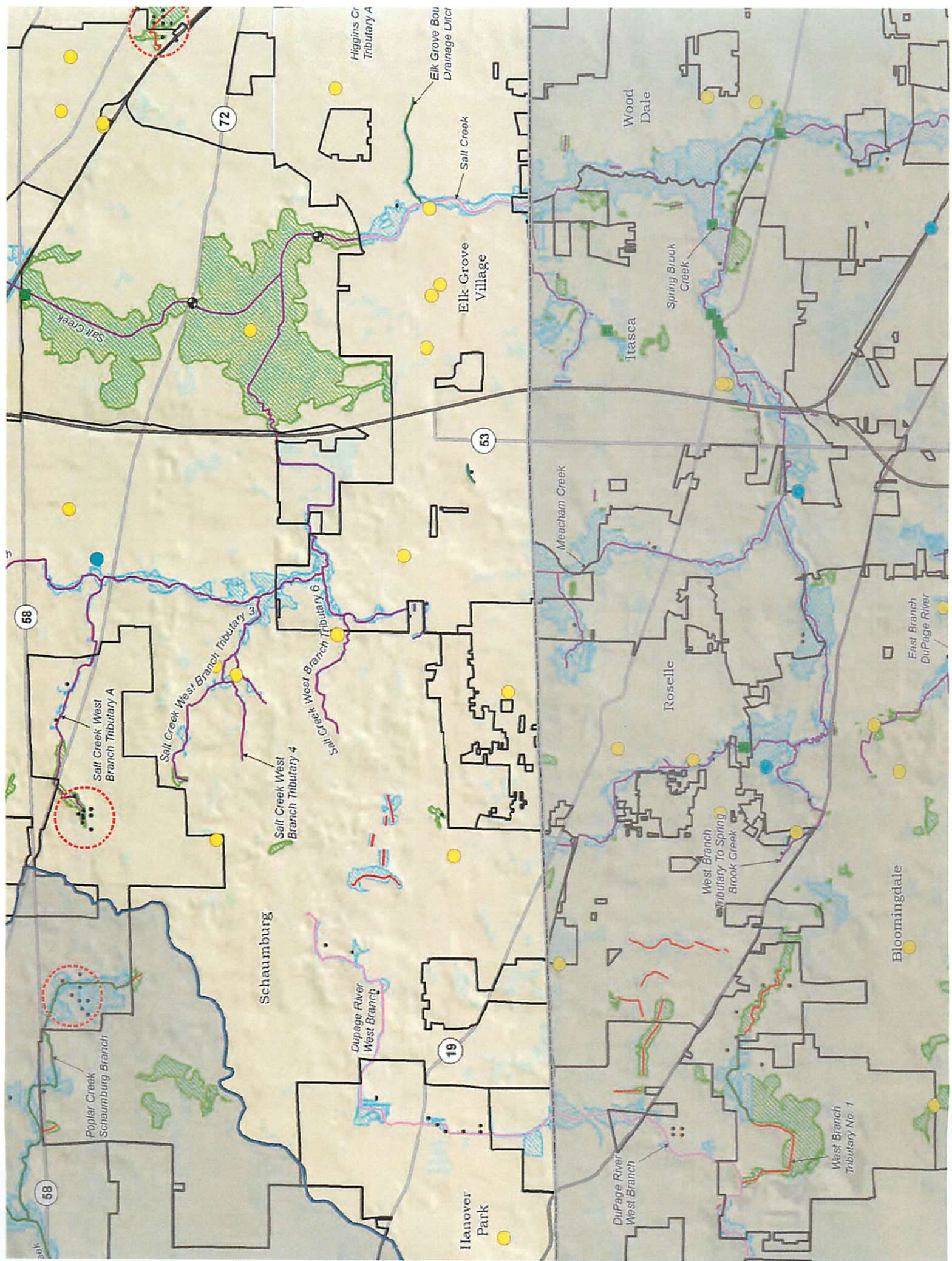
## **APPENDIX 4**

**Watershed Exhibits  
(Chicago River Watershed & Des Plaines River Watershed)**









72

53

58

19

58

Higgins Cr  
Tributary A

Elk Grove Bou  
Drainage Utr

Elk Grove  
Village

Wood  
Dale

Itasca

Spring Brook  
Creek

Meacham  
Creek

Roselle

East Branch  
DuPage River

Bloomingdale

Schaumburg

Hanover  
Park

West Branch  
Tributary No. 1

DuPage River  
West Branch

West Branch  
Tributary To Spring  
Brook Creek

DuPage River  
West Branch

Salt Creek West  
Branch Tributary 4

Salt Creek West Branch  
Tributary 3

Salt Creek West  
Branch Tributary A

Poplar Creek  
Schaumburg Branch

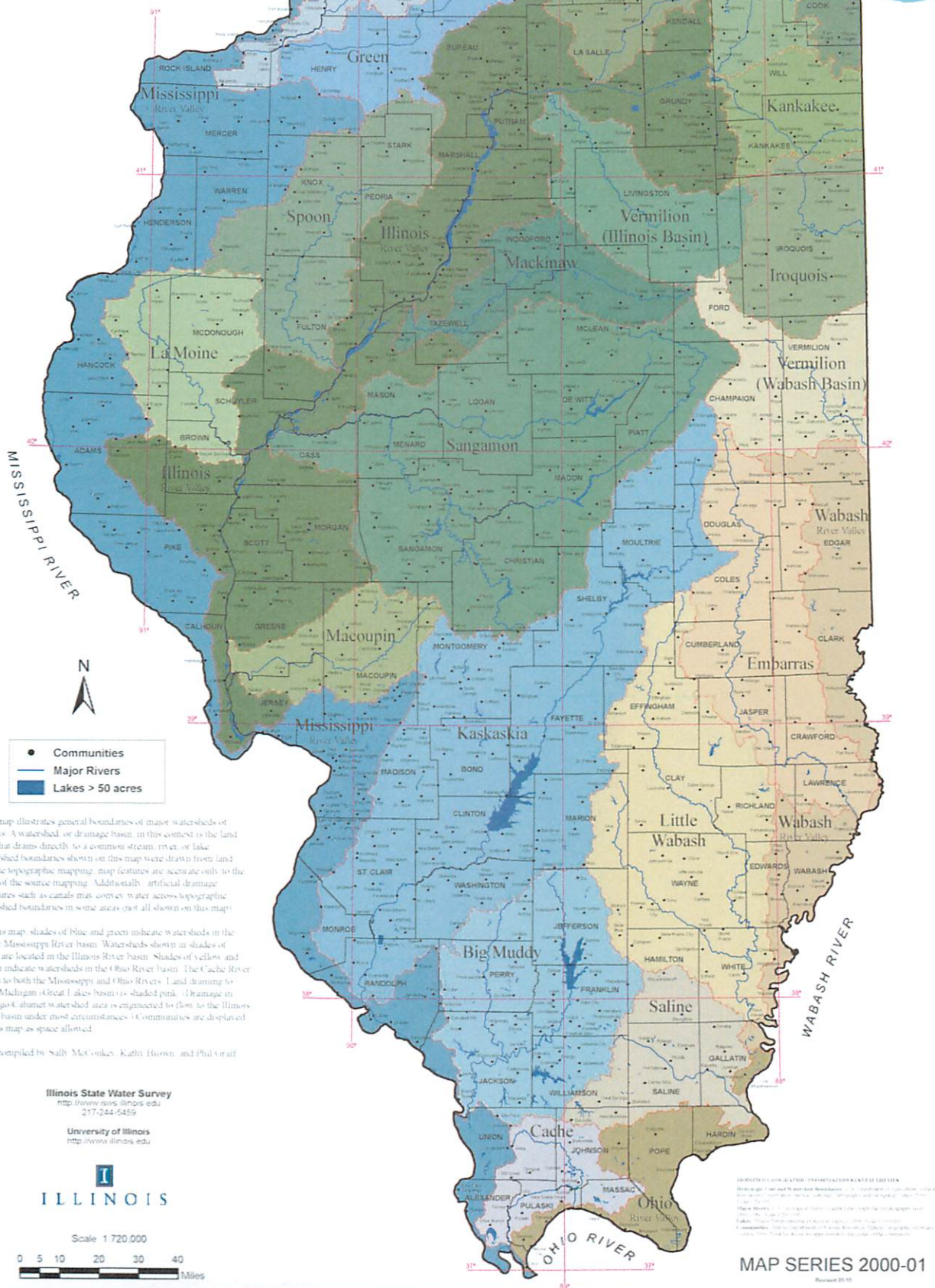


## **APPENDIX 5**

### **Major Watersheds of Illinois Map**

# Major Watersheds of Illinois

Illinois State Water Survey



This map illustrates general boundaries of major watersheds of Illinois. A watershed, or drainage basin, in this context is the land area that drains directly to a common stream, river, or lake. Watershed boundaries shown on this map were drawn from land surface topographic mapping; map features are accurate only to the scale of the source mapping. Additionally, artificial drainage structures such as canals may convey water across topographic watershed boundaries in some areas (not all shown on this map).

On this map, shades of blue and green indicate watersheds in the Upper Mississippi River basin. Watersheds shown in shades of green are located in the Illinois River basin. Shades of yellow and brown indicate watersheds in the Ohio River basin. The Cache River drains to both the Mississippi and Ohio Rivers. Land draining to Lake Michigan (Great Lakes basin) is shaded pink. (Drainage in Chicago/Calumet watershed area is engineered to flow to the Illinois River basin under most circumstances.) Communities are displayed on this map as space allowed.

Map compiled by Sally McGivens, Kathy Brown, and Phil Craft

Illinois State Water Survey  
<http://www.isws.uiowa.edu>  
217-244-5459

University of Illinois  
<http://www.uiowa.edu>

**ILLINOIS**

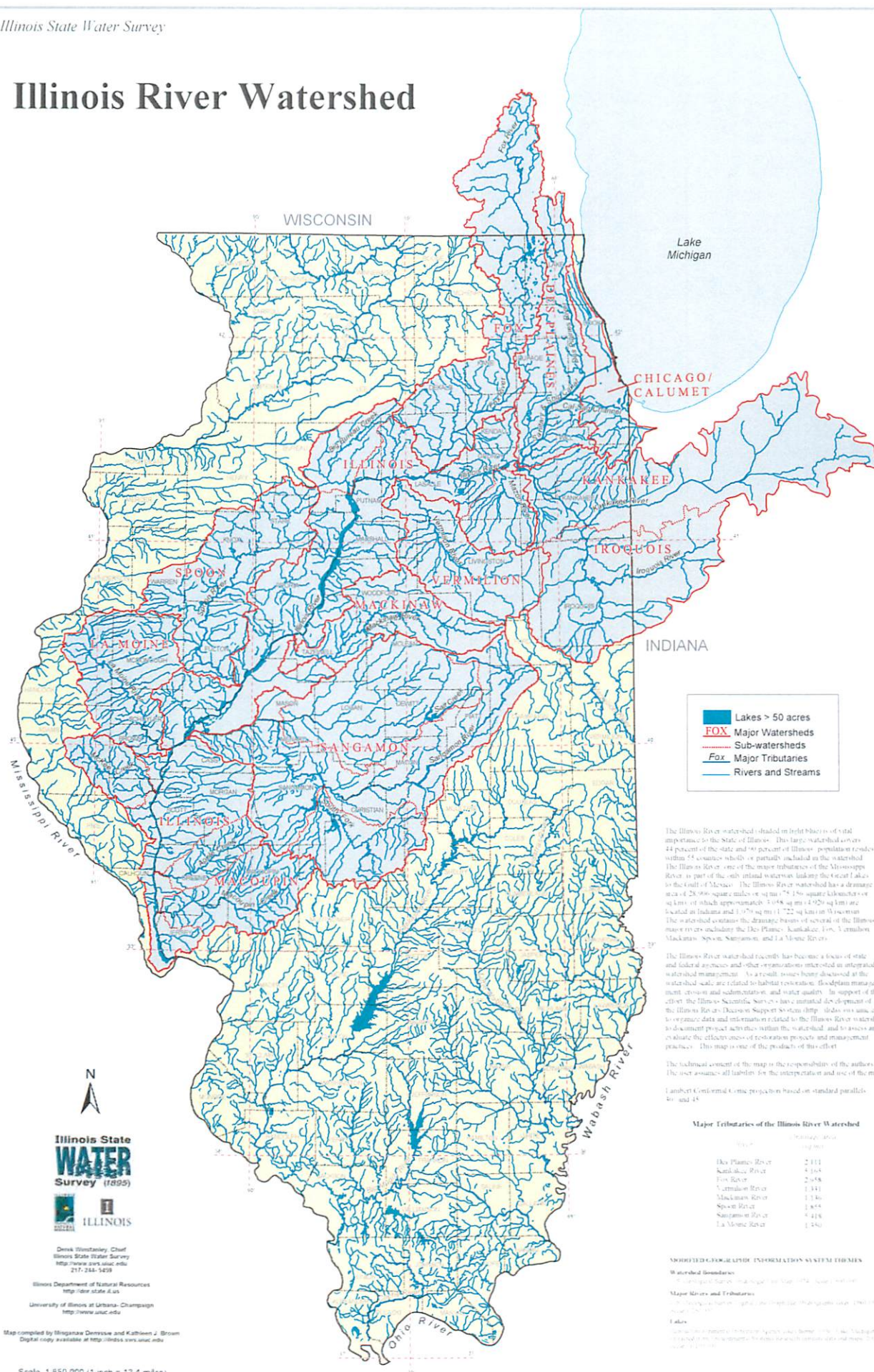
ILLINOIS STATE WATER SURVEY, UNIVERSITY OF ILLINOIS, URBANA, ILLINOIS  
This map is a reproduction of the original map published by the Illinois State Water Survey, University of Illinois, Urbana, Illinois. It is not to be used for any purpose other than that for which it was originally published. The Illinois State Water Survey, University of Illinois, Urbana, Illinois, is not responsible for any errors or omissions in this map. The Illinois State Water Survey, University of Illinois, Urbana, Illinois, is not responsible for any damages or losses resulting from the use of this map. The Illinois State Water Survey, University of Illinois, Urbana, Illinois, is not responsible for any claims or liabilities resulting from the use of this map. The Illinois State Water Survey, University of Illinois, Urbana, Illinois, is not responsible for any claims or liabilities resulting from the use of this map.



## **APPENDIX 6**

### **Illinois River Watershed Map**

# Illinois River Watershed



The Illinois River watershed (shaded in light blue) is of vital importance to the State of Illinois. This large watershed covers 44 percent of the state and 90 percent of Illinois' population resides within 15 counties wholly or partially included in the watershed. The Illinois River, one of the major tributaries of the Mississippi River, is part of the only inland waterway linking the Great Lakes to the Gulf of Mexico. The Illinois River watershed has a drainage area of 28,900 square miles or 75,150 square kilometers or 64,000 square miles (167,000 sq km) (1,722 sq km) in Wisconsin. The watershed contains the drainage basins of several of the Illinois' major rivers including the Des Plaines, Kankakee, Fox, Vermilion, Mazon, Spoon, Sangamon, and La Moine Rivers.

The Illinois River watershed recently has become a focus of state and federal agencies and other organizations interested in integrated watershed management. As a result, issues have been discussed in the watershed, such as related to habitat restoration, floodplain management, erosion and sedimentation, and water quality. In support of this effort, the Illinois Scientific Survey has initiated development of the Illinois River Decision Support System (http://idss.srs.uiuc.edu) to organize data and information related to the Illinois River watershed to document project activities within the watershed, and to assess and evaluate the effectiveness of restoration projects and management practices. This map is one of the products of this effort.

The technical content of the map is the responsibility of the authors. The user assumes all liability for the interpretation and use of the map. Lambert Conformal Conic projection based on standard parallels 40° and 48°.

## **APPENDIX 7**

**Village of Harwood Heights 2019 Notice of Intent**



# Illinois Environmental Protection Agency

Bureau of Water • 1021 North Grand Avenue East • P.O. Box 19276 • Springfield • Illinois • 62794-9276

## Notice of Intent for New or Renewal of General Permit for Discharges from Small Municipal Separate Storm Sewer Systems - MS4's

### Part I. General Information

1. MS 4 Operator Name: Village of Harwood Heights
2. MS4 Mailing Address: 7300 W. Wilson Ave.  
City: Harwood Heights State: IL
3. Operator Type: Village Other: \_\_\_\_\_
4. Operator Status: Local Other: \_\_\_\_\_
5. Name(s) of governmental entity(ies) in which MS4 is located:  
Cook County
6. Area of land that drains to your MS4 in square miles: 0.3
7. Latitude and Longitude at approximate geographical center of MS4 for which you are requesting authorization to discharge:  

Latitude:			Longitude:		
<u>41</u>	<u>58</u>	<u>1.64</u>	<u>87</u>	<u>49</u>	<u>1.46</u>
Degrees	Minutes:	Seconds:	Degrees:	Minutes:	Seconds:
8. Name(s) of known receiving waters  
N/A

## 9. Persons responsible for implementation or coordination of Stormwater Management Program:

Name: George Assimakopoulos Title: Public Works Project Manager Phone: 708-867-7206  
 Area of Responsibility: Overall Implementation

Name: Christopher B Burke Eng Ltd Title: Village Consultant Engineer Phone: 847-823-0500  
 Area of Responsibility: Control Measures 1-6

**Part II. Best Management Practices (include shared responsibilities) which have been implemented or are proposed to be implemented in the MS4 area:**

**A. Public Education and Outreach**

**Qualifying Local Programs:**

The Village performs activities that meet the requirements of the Public Education and Outreach minimal control requirements. These activities include BMP's A.1

**Measurable Goals (include shared responsibilities)**

☒ A.1 Distributed Paper Material

**Brief Description of BMP:**

The Village will continue to produce and make available calendars with lawn sprinkling requirements.

**Measurable Goals, including frequencies:**

The goal of this program is to increase the awareness of impacts of storm water discharges on water bodies and the steps the public can take to reduce pollutants in storm water runoff.

**Milestones:**

Go to Additional  
Pages

**Year 1:**

The public works department will continue to produce and make the informational calendars.

**Year 2:**

The public works department will continue to produce and make the informational calendars.

**Year 3:**

The public works department will continue to produce and make the informational calendars.

**Year 4:**

The public works department will continue to produce and make the informational calendars.

**Year 5:**

The public works department will continue to produce and make the informational calendars.

- ☐ A.2 Speaking Engagement
- ☐ A.3 Public Service Announcement
- ☐ A.4 Community Event
- ☐ A.5 Classroom Education Material
- ☐ A.6 Other Public Education



## B.Public Participation/Involvement

Measurable Goals (include shared responsibilities)

Qualifying Local Programs:

The Village performs a variety of activities that meet the requirements of the Public Participation and Involvement minimum control measure. These activities include BMP's: B.4 and B.5.

☐ B.2 Educational Volunteer

☐ B.3 Stakeholder Meeting

☒ B.4 Public Hearing

(You may need to go to the next page to fill in this information)

Brief Description of BMP:

The Village will hold a public hearing to discuss topics including steps the public can take to reduce pollutants to stormwater runoff or the impacts of stormwater runoff on local water bodies.

Measurable Goals, including frequencies:

The goal is to increase public education and involvement regarding the Village's stormwater management and NDPES program and their knowledge on ways they can help.

Milestones:

Year 1:

Hold a public hearing at least once a year.

Year 2:

Hold a public hearing at least once a year.

Year 3:

Hold a public hearing at least once a year.

Year 4:

Hold a public hearing at least once a year.

Year 5:

Hold a public hearing at least once a year.

Go to Additional  
Pages

☒ B.5 Volunteer Monitoring

(You may need to go to the next page to fill in this information)

Brief Description of BMP:

The Village coordinates with local volunteer groups to make sure all storm-related questions/complaints are answered.

Measurable Goals, including frequencies:

The goal of this activity is to encourage public volunteering and ensure that all questions/complaints are answered.

Milestones:

Year 1:

The Village will continue to post the Village Hall phone number to answer all storm-water related questions/complaints.

Year 2:

The Village will continue to post the Village Hall phone number to answer all storm-water related questions/complaints.

Year 3:

The Village will continue to post the Village Hall phone number to answer all storm-water related questions/complaints.

Year 4:

The Village will continue to post the Village Hall phone number to answer all storm-water related questions/complaints.

Year 5:

The Village will continue to post the Village Hall phone number to answer all storm-water related questions/complaints.

Go to Additional  
Pages

- ☐ B.6. Program Involvement
- ☐ B.7 Other Public Involvement



**C. Illicit Discharge Detection and Elimination****Qualifying Local Programs:**

The Village and Cook County perform a variety of activities that meet the requirements of the Illicit Discharge Detection and Elimination minimum control measure. These activities include BMP's: C.1, C.2, C.3, C.4, C.5, and C.7.

**Measurable Goals (include shared responsibilities)**

☒ C.1 Sewer Map Preparation

(You may need to go to the next page to fill in this information)

**Brief Description of BMP:**

The Village currently has a storm sewer map.

**Measurable Goals, including frequencies:**

The goal of this program is to develop a storm sewer map for the Village to allow for quicker, more accurate tracing procedures.

**Milestones:**

Year 1:

The Public Works Department will continue to update the map as needed.

Year 2:

The Public Works Department will continue to update the map as needed.

Year 3:

The Public Works Department will continue to update the map as needed.

Year 4:

The Public Works Department will continue to update the map as needed.

Year 5:

The Public Works Department will continue to update the map as needed.

Go to Additional  
Pages

☒ C.2 Regulatory Control Program

(You may need to go to the next page to fill in this information)

The Village and County have ordinances in place to prohibit non-stormwater discharges to the municipal separate storm sewer system.

Measurable Goals, including frequencies:

The goal of this program is to eliminate any non-stormwater discharges to the storm sewer system.

Milestones:

Year 1:

The Village will continue to enforce the regulatory control measures to prohibit or eliminate non-stormwater discharges.

Year 2:

The Village will continue to enforce the regulatory control measures to prohibit or eliminate non-stormwater discharges.

Year 3:

The Village will continue to enforce the regulatory control measures to prohibit or eliminate non-stormwater discharges.

Year 4:

The Village will continue to enforce the regulatory control measures to prohibit or eliminate non-stormwater discharges.

Year 5:

The Village will continue to enforce the regulatory control measures to prohibit or eliminate non-stormwater discharges.

Go to Additional  
Pages

☒ C.3 Detection/Elimination Prioritization Plan (You may need to go to the next page to fill in this information)

Brief Description of BMP:

The Village has procedures for handling the report of a possible illicit discharge to the storm sewer system. The Village also has procedures for tracking reports of illicit discharges and the enforcement measures to facilitate the elimination of illicit discharges once they are discovered, tracked, and investigated.

Measurable Goals, including frequencies:

The goal of this program is to develop a procedure for receiving, tracking, investigating, and eliminating illicit discharges to the storm sewer system.

Milestones:

Year 1:

The Village will continue the illicit discharge procedures.

Year 2:

The Village will continue the illicit discharge procedures.

Year 3:

The Village will continue the illicit discharge procedures.

Year 4:

The Village will continue the illicit discharge procedures.

Year 5:

The Village will continue the illicit discharge procedures.

Go to Additional  
Pages

☐ C.4 Illicit Discharge Tracing Procedures

☒ C.5 Illicit Source Removal Procedures (You may need to go to the next page to fill in this information)

The Village has procedures for handling the report of possible illicit discharge to the storm sewer system. The Village also has procedures for tracking reports of illicit discharges and the enforcement measures the Land Development Code to facilitate the elimination of illicit discharges once they are discovered, tracked, and investigated.

Measurable Goals, including frequencies:

The goal of this program is to develop a procedure for tracking, investigating, and elimination illicit discharges to the storm sewer system.

Milestones:

Year 1:

The Village will continue the illicit discharge procedures.

Year 2:

The Village will continue the illicit discharge procedures.

Year 3:

The Village will continue the illicit discharge procedures.

Year 4:

The Village will continue the illicit discharge procedures.

Year 5:

The Village will continue the illicit discharge procedures.

Go to Additional  
Pages

☐ C.6 Program Evaluation and Assessment

☒ C.7 Visual Dry Weather Screening (You may need to go to the next page to fill in this information)

Brief Description of BMP:

The Village will perform an annual inspection of all MS4 outfalls during dry weather conditions.

Measurable Goals, including frequencies:

The goal of this activity is to identify outfalls with potential illicit discharges.

Milestones:

Year 1:

The Village will continue to perform annual inspections

Year 2:

The Village will continue to perform annual inspections

Year 3:

The Village will continue to perform annual inspections

Year 4:

The Village will continue to perform annual inspections

Year 5:

The Village will continue to perform annual inspections

Go to Additional  
Pages

☐ C.8 Pollutant Field Testing

☐ C.9 Public Notification

**D. Construction Site Runoff Control**

Measurable Goals (include shared responsibilities)

Qualifying Local Programs:

The Village performs a variety of activities that meet the requirements of the Construction Site Runoff Control minimum control measure. This program relates to BMP's: D.1, D.2, D.4, D.5, and D.6.

☒ D.1 Regulatory Control Program

(You may need to go to the next page to fill in this information)

Brief Description of BMP:

The Village has ordinances and procedures in place that require construction site runoff controls. These procedures include review of the site development plans by qualified staff and inspection/enforcement procedures.

Measurable Goals, including frequencies:

The goal of these activities is to reduce or prevent the discharge of pollutants from construction sites to the municipal separate storm sewer system.

Milestones:

Year 1:

The Village will continue the construction site runoff control program.

Year 2:

The Village will continue the construction site runoff control program.

Year 3:

The Village will continue the construction site runoff control program.

Year 4:

The Village will continue the construction site runoff control program.

Year 5:

The Village will continue the construction site runoff control program.

Go to Additional  
Pages

☒ D.2 Erosion and Sediment Control BMPs

(You may need to go to the next page to fill in this information)

Brief Description of BMP:

The Village has ordinances and procedures in place that require construction site runoff controls. These procedures include review of the site development plans by qualified staff and inspection/enforcement procedures.

Measurable Goals, including frequencies:

The goal of these activities is to reduce or prevent the discharge of pollutants from construction sites to the municipal separate storm sewer system.

Milestones:

Year 1:

The Village will continue the construction site runoff control program.

Year 2:

The Village will continue the construction site runoff control program.

Year 3:

The Village will continue the construction site runoff control program.

Year 4:

The Village will continue the construction site runoff control program.

The Village will continue the construction site runoff control program.

Go to Additional  
Pages

☐ D.3 Other Waste Control Program

☒ D.4 Site Plan Review Procedures

(You may need to go to the next page to fill in this information)

Brief Description of BMP:

The Village has ordinances and procedures in place that require construction site runoff controls. These procedures include review of the site development plans by qualified staff and inspection/enforcement procedures.

Measurable Goals, including frequencies:

The goal of these activities is to reduce or prevent the discharge of pollutants from construction sites to the municipal separate storm sewer system.

Milestones:

Year 1:

The Village will continue the construction site runoff control program.

Year 2:

The Village will continue the construction site runoff control program.

Year 3:

The Village will continue the construction site runoff control program.

Year 4:

The Village will continue the construction site runoff control program.

Year 5:

The Village will continue the construction site runoff control program.

Go to Additional  
Pages

☒ D.5 Public Information Handling Procedures (You may need to go to the next page to fill in this information)

Brief Description of BMP:

The Village has procedures in place for addressing reports from residents to construction site runoff.

Measurable Goals, including frequencies:

The Village will continue to address the reporting of problems related to construction site runoff.

Milestones:

Year 1:

The Village will continue the program to address reports related to construction site runoff control ideas.

Year 2:

The Village will continue the program to address reports related to construction site runoff control ideas.

Year 3:

The Village will continue the program to address reports related to construction site runoff control ideas.

Year 4:

The Village will continue the program to address reports related to construction site runoff control ideas.

Year 5:

The Village will continue the program to address reports related to construction site runoff control ideas.

Go to Additional  
Pages

☒ D.6 Site Inspection/Enforcement Procedures (You may need to go to the next page to fill in this information)

Brief Description of BMP:

The Village has ordinances and procedures in place that require construction site runoff controls. These procedures include review of the site development plans by qualified staff and inspection/enforcement procedures.

Measurable Goals, including frequencies:

The goal of these activities is to reduce or prevent the discharge of pollutants from construction sites to the municipal separate storm sewer system.

Milestones:

Year 1:

The Village will continue the construction site runoff control program.

Year 2:

The Village will continue the construction site runoff control program.

Year 3:

The Village will continue the construction site runoff control program.

Year 4:

The Village will continue the construction site runoff control program.

Year 5:

The Village will continue the construction site runoff control program.

Go to Additional  
Pages

☐ D.7 Other Construction Site Runoff Controls

## E. Post-Construction Runoff Control

### Qualifying Local Programs:

The Village performs a variety of activities that meet the requirements of the Post-Construction Runoff Control minimum control measure. This relates to BMP's: E.2, E.3, E.4, E.5, and E.6.

### Measurable Goals (include shared responsibilities)

☐ E.1 Community Control Strategy

☒ E.2 Regulatory Control Program

### Brief Description of BMP:

The Village has ordinances and procedures in place that protect water quality and reduce the discharge of pollutants by controlling post-construction site runoff. These procedures are amendable to modification due to climate change and include review of BMP designs by qualified staff and inspection/enforcement during and after construction.

### Measurable Goals, including frequencies:

The goal of these activities is to reduce or prevent the discharge of pollutants from construction sites to the municipal separate storm sewer system.

### Milestones:

#### Year 1:

The Village will continue the post-construction site runoff control program.

#### Year 2:

The Village will continue the post-construction site runoff control program.

#### Year 3:

The Village will continue the post-construction site runoff control program.

#### Year 4:

The Village will continue the post-construction site runoff control program.

#### Year 5:

The Village will continue the post-construction site runoff control program.

Go to Additional  
Pages

☒ E.3 Long Term O & M Procedures

(You may need to go to the next page to fill in this information)



The Village has procedures in place to protect water quality and reduce the discharge of pollutants by controlling post-construction site runoff. These procedures include the review of the BMP designs by qualified staff and inspection/enforcement during and after construction.

The Village in accordance with the MWRDGC WMO guidelines has procedures in place requiring the identification and responsible entity for long term maintenance of post construction BMPs required for development.

Measurable Goals, including frequencies:

The Village will continue these activities during the permitting process to identify and develop long term maintenance plans of BMPs and to reduce or prevent the discharge of pollutants from construction sites to the municipal separate storm sewer system.

Milestones:

Year 1:

The Village will continue the post construction runoff program.

Year 2:

The Village will continue the post construction runoff program.

Year 3:

The Village will continue the post construction runoff program.

Year 4:

The Village will continue the post construction runoff program.

Year 5:

The Village will continue the post construction runoff program.

Go to Additional  
Pages

☒ E.4 Pre-Construction Review of BMP Designs (You may need to go to the next page to fill in this information)

Brief Description of BMP:

The Village has ordinances and procedures in place that protect water quality and reduce the discharge of pollutants by controlling post-construction site runoff. These procedures include review of BMP designs by qualified staff and inspection/enforcement during and after construction.

Measurable Goals, including frequencies:

The goal of these activities is to reduce or prevent the discharge of pollutants from construction sites to the municipal separate storm sewer system.

Milestones:

Year 1:

The Village will continue the post-construction site runoff control program.

Year 2:

The Village will continue the post-construction site runoff control program.

Year 3:

The Village will continue the post-construction site runoff control program.

Year 4:

The Village will continue the post-construction site runoff control program.

Year 5:

The Village will continue the post-construction site runoff control program.

Go to Additional  
Pages

## Brief Description of BMP:

The Village has ordinances and procedures in place that protect water quality and reduce the discharge of pollutants by controlling post-construction site runoff. These procedures include review of BMP designs by qualified staff and inspection/enforcement during and after construction.

## Measurable Goals, including frequencies:

The goal of these activities is to reduce or prevent the discharge of pollutants from construction sites to the municipal separate storm sewer system.

## Milestones:

## Year 1:

The Village will continue the post-construction site runoff control program.

## Year 2:

The Village will continue the post-construction site runoff control program.

## Year 3:

The Village will continue the post-construction site runoff control program.

## Year 4:

The Village will continue the post-construction site runoff control program.

## Year 5:

The Village will continue the post-construction site runoff control program.

Go to Additional  
Pages

☒ E.6 Post-Construction Inspections

## Brief Description of BMP:

The Village has ordinances and procedures in place that protect water quality and reduce the discharge of pollutants by controlling post-construction site runoff. These procedures include review of BMP designs by qualified staff and inspection/enforcement during and after construction.

## Measurable Goals, including frequencies:

The goal of these activities is to reduce or prevent the discharge of pollutants from construction sites to the municipal separate storm sewer system.

## Milestones:

## Year 1:

The Village will continue the post-construction site runoff control program.

## Year 2:

The Village will continue the post-construction site runoff control program.

## Year 3:

The Village will continue the post-construction site runoff control program.

## Year 4:

The Village will continue the post-construction site runoff control program.

## Year 5:

The Village will continue the post-construction site runoff control program.

Go to Additional  
Pages

☐ E.7 Other Post-Construction Runoff Controls

## F. Pollution Prevention/Good Housekeeping

Measurable Goals (include shared responsibilities)

Qualifying Local Programs:

The Village performs a variety of activities that meet the requirements of the Pollution Prevention/Good Housekeeping minimum control measure. This relates to BMPs: F.1, F.2, F.3, F.4, F.5, and F.6.

☒ F.1 Employee Training Program

(You may need to go to the next page to fill in this information)

Brief Description of BMP:

The Village will provide training and other presentations that provide guidance and procedures for employees and vendors to reduce or eliminate the discharges of pollutants from Village owned facilities and activities to the storm sewer system.

Measurable Goals, including frequencies:

The Village will continue to educate Public Works employees and vendors of current practices that contribute to storm water pollution and/or to develop new procedures and make revisions to existing procedures that will curtail the discharge of pollutants to storm sewer systems by Public Works employees, annually.

Milestones:

Year 1:

The Village will continue the pollution prevention and good housekeeping program to reduce or prevent the discharge of pollutants from municipal activities to the storm sewer system.

Year 2:

The Village will continue the pollution prevention and good housekeeping program to reduce or prevent the discharge of pollutants from municipal activities to the storm sewer system.

Year 3:

The Village will continue the pollution prevention and good housekeeping program to reduce or prevent the discharge of pollutants from municipal activities to the storm sewer system.

Year 4:

The Village will continue the pollution prevention and good housekeeping program to reduce or prevent the discharge of pollutants from municipal activities to the storm sewer system.

Year 5:

The Village will continue the pollution prevention and good housekeeping program to reduce or prevent the discharge of pollutants from municipal activities to the storm sewer system.

Go to Additional  
Pages

☒ F.2 Inspection and Maintenance Program

(You may need to go to the next page to fill in this information)

The Village has procedures and inspections forms for the routine inspections and cleaning of catch basins and street sweeping.

## Measurable Goals, including frequencies:

The goal is to identify and repair any stormwater issues with the municipal separate stormwater sewer system.

## Milestones:

## Year 1:

The Village will continue with the inspection and maintenance program.

## Year 2:

The Village will continue with the inspection and maintenance program.

## Year 3:

The Village will continue with the inspection and maintenance program.

## Year 4:

The Village will continue with the inspection and maintenance program.

## Year 5:

The Village will continue with the inspection and maintenance program.

Go to Additional  
Pages

☒ F.3 Municipal Operations Storm Water Control (You may need to go to the next page to fill in this information)

## Brief Description of BMP:

The Village has procedures and policies in place to prevent or reduce the discharge of pollutants from municipal operations and actions by determining and scheduling upgrades at maintenance facilities.

## Measurable Goals, including frequencies:

The goal is to prevent or reduce the discharge of pollutants to the storm sewer system by municipal operations.

## Milestones:

## Year 1:

The Village will continue the municipal operations stormwater control program.

## Year 2:

The Village will continue the municipal operations stormwater control program.

## Year 3:

The Village will continue the municipal operations stormwater control program.

## Year 4:

The Village will continue the municipal operations stormwater control program.

## Year 5:

The Village will continue the municipal operations stormwater control program.

Go to Additional  
Pages

☒ F.4 Municipal Operations Waste Disposal (You may need to go to the next page to fill in this information)

The Village has procedures and policies to require the appropriate disposal of municipal generated wastes.

## Measurable Goals, including frequencies:

The Village will continue the municipal operations waste control program to curtail the discharge of pollutants to storm sewer systems by Public Works employees.

## Milestones:

Year 1:

The Village will continue the municipal waste operations control program.

Year 2:

The Village will continue the municipal waste operations control program.

Year 3:

The Village will continue the municipal waste operations control program.

Year 4:

The Village will continue the municipal waste operations control program.

Year 5:

The Village will continue the municipal waste operations control program.

Go to Additional  
Pages

☒ F.5 Flood Management/Assess Guidelines (You may need to go to the next page to fill in this information)

## Brief Description of BMP:

The Village ordinances require the appropriate management of development and other uses within special flood hazard areas.

## Measurable Goals, including frequencies:

The Village will continue to enforce the ordinance regarding potential uses of the special flood hazard area to limit potential for the discharge of contaminants to the storm sewer system.

## Milestones:

Year 1:

The Village will continue the special flood hazard area development and use requirements.

Year 2:

The Village will continue the special flood hazard area development and use requirements.

Year 3:

The Village will continue the special flood hazard area development and use requirements.

Year 4:

The Village will continue the special flood hazard area development and use requirements.

Year 5:

The Village will continue the special flood hazard area development and use requirements.

Go to Additional  
Pages

☒ F.6 Other Municipal Operations Controls (You may need to go to the next page to fill in this information)

The Village has procedures regarding salt storage and application procedures and make changes as necessary.

Measurable Goals, including frequencies:

The goal is to prevent or reduce the discharge of pollutants to the storm sewer system by salt storage and application.

Milestones:

Year 1:

The Village will make changes to the salt storage and application procedures as necessary.

Year 2:

The Village will make changes to the salt storage and application procedures as necessary.

Year 3:

The Village will make changes to the salt storage and application procedures as necessary.

Year 4:

The Village will make changes to the salt storage and application procedures as necessary.

Year 5:

The Village will make changes to the salt storage and application procedures as necessary.

Go to Additional  
Pages

**Part III. Certification**

**I certify under penalty of law that this document and all attachments were prepared under my direction or supervision in accordance with a system designed to assure that qualified personnel properly gathered and evaluated the information submitted. Based on my inquiry of the person or persons who manage the system, or those persons directly responsible for gathering the information, the information submitted is, to the best of my knowledge and belief, true, accurate, and complete. I am aware that there are significant penalties for knowingly submitting false information, including the possibility of fines and imprisonment.**

**Any person who knowingly makes a false, fictitious, or fraudulent material statement, orally or in writing, to the Illinois EPA commits a Class 4 felony. A second or subsequent offense after conviction is a Class 3 felony (415 ILCS 5/44 (h)).**

---

Arlene Jezierny

---

Mayor, Village of Harwood Heights

Authorized Representative Name

Title

Date

---

Authorized Representative Signature

You may complete this form online and save a copy locally before printing and signing the form. It should then be sent to:

Illinois Environmental Protection Agency  
Bureau of Water  
Division of Water Pollution Control  
Attn: Permit Section  
P.O. Box 19276  
1021 North Grand Avenue East  
Springfield, IL 62794-9276



A. Public Education and Outreach

BMP Number \_\_\_\_\_

Add Another BMP

Delete Last Entry

B. Public Participation/Involvement

BMP Number

\_\_\_\_\_

Add Another BMP

Delete Last Entry

C. Illicit Discharge Detection and

BMP Number \_\_\_\_\_

Add Another BMP

Delete Last Entry

D. Construction Site Runoff Control

BMP Number \_\_\_\_\_

Add Another BMP

Delete Last Entry

E. Post-Construction Runoff Control

BMP Number \_\_\_\_\_

Add Another BMP

Delete Last Entry

F. Pollution Prevention/Good

BMP Number \_\_\_\_\_

Add Another BMP

Delete Last Entry



## **APPENDIX 8**

**Village of Harwood Heights Annual Facility Inspection Reports Years  
13-18**

ILLINOIS ENVIRONMENTAL PROTECTION AGENCY  
ANNUAL FACILITY INSPECTION REPORT  
NPDES PERMIT FOR STORM WATER DISCHARGES  
FROM MUNICIPAL SEPARATE STORM SEWER SYSTEMS (MS4)  
Website address: <http://www.epa.state.il.us/water/permits/storm-water/forms/annual-facility-inspection-ms4.pdf>

complete each section of this report.

REPORT PERIOD:

FROM: MARCH, 2012

TO: MARCH, 2013

MS4 OPERATOR INFORMATION: (As it appears on the current permit)

NAME: Village of Harwood Heights	TELEPHONE NUMBER: (708) 867-7206	
MAILING ADDRESS: 7300 W. Wilson Ave		
CITY: Harwood Hts	STATE: IL	ZIP: 60706
CONTACT PERSON: George Assimakopoulou (Person responsible for Annual Report)		

NAME(S) OF GOVERNMENTAL ENTITY(IES) IN WHICH MS4 IS LOCATED: (As it appears on the current permit)

State of Illinois	Cook County
Norwood Park Township	Village of Harwood Hts

THE FOLLOWING ITEMS MUST BE ADDRESSED.

A. CHANGES TO BEST MANAGEMENT PRACTICES (check appropriate BMP change(s) and attach information regarding change(s) to BMP and measurable goals.)

1. Public Education and Outreach	<input checked="" type="checkbox"/>	4. Construction Site Runoff Control	<input type="checkbox"/>
Public Participation/Involvement	<input checked="" type="checkbox"/>	5. Post-Construction Runoff Control	<input type="checkbox"/>
3. Illicit Discharge Detection & Elimination	<input checked="" type="checkbox"/>	6. Pollution Prevention/Good Housekeeping	<input checked="" type="checkbox"/>

B. Attach the status of compliance with permit conditions, an assessment of the appropriateness of your identified best management practices and progress towards achieving the statutory goal of reducing the discharge of pollutants to the MEP, and your identified measurable goals for each of the minimum control measures.

C. Attach results of information collected and analyzed, including monitoring data, if any during the reporting period.

D. Attach a summary of the storm water activities you plan to undertake during the next reporting cycle (including an implementation schedule.)

E. Attach notice that you are relying on another government entity to satisfy some of your permit obligations (if applicable).

F. Attach a list of construction projects that your entity has paid for during the reporting period.

SIGNATURE: George Assimakopoulou

DATE: 6-25-13

Please submit inspection reports to:

Illinois Environmental Protection Agency, DWPC  
Compliance Assurance Section  
1021 North Grand Avenue East, POB 19276  
Springfield, Illinois 62794-9276

**General NPDES Permit No. ILR40**

Illinois Environmental Protection Agency  
Division of Water Pollution Control  
1021 North Grand East  
P.O. Box 19276  
Springfield, Illinois 62794-9276

**NATIONAL POLLUTANT DISCHARGE ELIMINATION SYSTEM**

**General NPDES Permit  
For  
Discharges from Small Municipal Separate Storm Sewer Systems**

**Expiration Date: March 31, 2014**

**Issue Date: February 20, 2009**

**Effective Date: April 1, 2009**

In compliance with the provisions of the Illinois Environmental Protection Act, the Illinois Pollution Control Board Rules and Regulations (35 Ill. Adm. Code, Subtitle C, Chapter 1) and the Clean Water Act, the following discharges may be authorized by this permit in accordance with the conditions herein:

Discharges of only storm water from small municipal separate storm sewer systems, as defined and limited herein. Storm water means storm water runoff, snow melt runoff, and surface runoff and drainage.

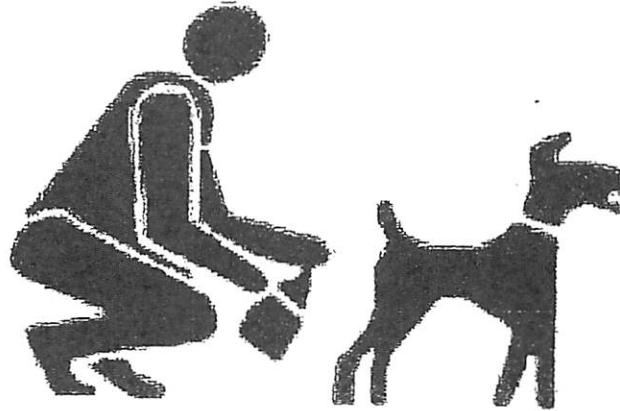
**Receiving waters:** Discharges may be authorized to any surface water of the State.

To receive authorization to discharge under this general permit, a facility operator must submit an application as described in the permit conditions to the Illinois Environmental Protection Agency. Authorization, if granted, will be by letter and include a copy of this permit.



Alan Keller, P.E.  
Manager, Permit Section  
Division of Water Pollution Control

# Be Responsible!!!



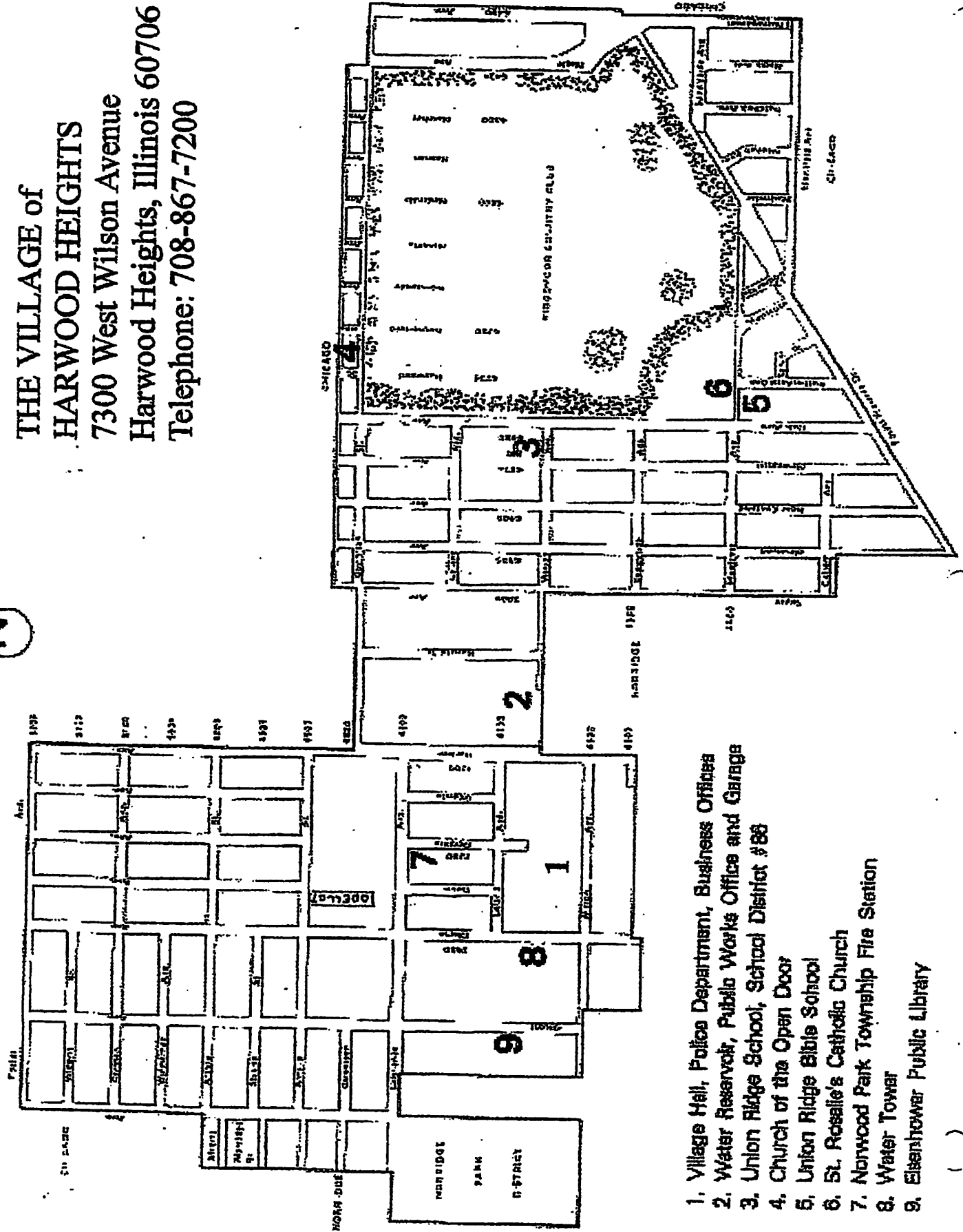
## Please...Clean up after your dog.

Be proud to be seen picking up after your dog. Picking up shows pride in your community, in yourself, and in your dog. You set a great example for others, you keep our village clean and you help create a brighter future for dogs and their people.

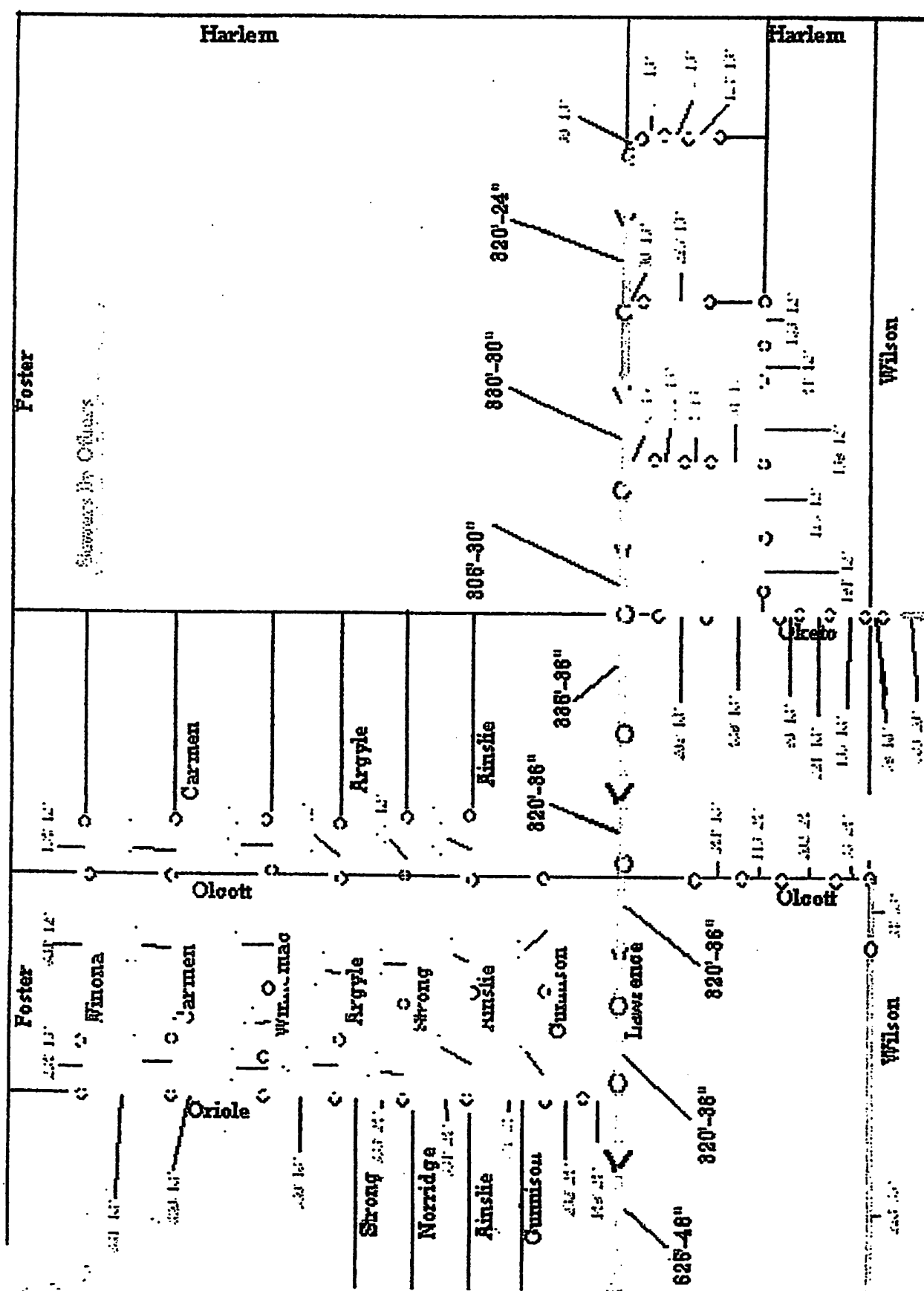
### VILLAGE OF HARWOOD HEIGHTS - VILLAGE CODE 6.08.030, SECTION D- REMOVAL OF FECES

The owner of every animal shall be responsible for the removal and sanitary disposition of any feces deposited by his/her animal anywhere in the village. When accompanying the animal outside his/her property, the owner shall have on his/her person suitable means for the removal of such feces and a depository for the transmission of feces to a receptacle located upon property owned or possessed by such person. The legally blind which are being led outside of their property by a guide dog shall be exempt from this section. No dog, cat, or other animal shall be walked in an area where signs prohibit such action. Please respect your fellow residents and show common courtesy when walking your dog. Any person in violation will be ticketed.

THE VILLAGE of  
**HARWOOD HEIGHTS**  
 7300 West Wilson Avenue  
 Harwood Heights, Illinois 60706  
 Telephone: 708-867-7200



1. Village Hall, Police Department, Business Offices
2. Water Reservoir, Public Works Office and Garage
3. Union Ridge School, School District #88
4. Church of the Open Door
5. Union Ridge Bible School
6. St. Rosalie's Catholic Church
7. Norwood Park Township Fire Station
8. Water Tower
9. Eisenhower Public Library





# Chicago, Illinois, United States



Copyright © 2004 Microsoft Corp. and/or its suppliers. All rights reserved. <http://www.microsoft.com/located>  
 © Copyright 2004 Microsoft Corp. and/or its suppliers. All rights reserved. <http://www.microsoft.com/located>  
 Geographic Data Technology, Inc. All rights reserved. © 2004 NAVTEQ. All rights reserved. This data is not for sale.

Not taken with permission from Ordnance Survey or Her Majesty the Queen in Right of Canada.

## Specifications

3N806

- PROJECT:** Stormwater Lift Station  
Oriole Avenue Pump Station  
Harwood Heights, Illinois
- Application:** Duplex Concrete Lift Station
- Model:** (2) Hydromatic Model S3SD300M3/4-4 Submersible Pump with 50' Length of cords.
- Capacity:** 137.5 GPM @ 25 FT. TDH with 3" discharge.
- Motor(s):** 3 HP, 1750 RPM, 460 Voltage, 3 Phase, 60 Hz., 1.2 S.F.
- Control:** (1) Mercury level switch with 50' cords.
- Control Panel:** Furnished  
Control panel to include magnetic starters, circuit breakers, run lights, H-O-A switches, electric alternator, panel disconnect switch, etms, heat & seal failure sensors, duplex convenience outlet all in a pole mounted enclosure.
- Alarm:** Alarm Light with Dim-Glow and Alarm Battery Back-Up.
- Basin:** 5'-0" dia. x 20'-0" deep Concrete with MTM Lift-Out System.  
(Concrete, Piping & Valves By Contractor)
- Accessories:** (1) Duplex Aluminum Wet Well Access Hatch Model APD300-24x38  
(2) 3" MTM Base/discharge Elbow Assembly  
(2) 3" MTM Sealing Flange Assembly  
(2) 20' Lengths of 3/16" Stainless Steel Lifting Chain  
(8) 10' Lengths of 1.5" Stainless Steel Guiderails  
(1) Duplex Set of Lower Guiderail Supports  
(1) Duplex Set of Intermediate Guiderail Supports  
(1) Duplex Set of Upper Guiderail Supports  
(1) Stainless Steel 4 Float Mounting Bracket  
(1) Stainless Steel Chain & 10 lb. Cast Iron Anchor Float Mounting System  
(1) Heat & Seal Failure Probes (per pump)

### METROPOLITAN PUMP COMPANY

*division of Metropolitan Industries, Inc.*

37 Forestwood Drive

Romeoville, Illinois 60446

phone: (815)886-9200 fax: (815)886-4573

# Village of Harwood Heights NPDES Phase 11

## National Pollutant Discharge Elimination System

Activity	06/07	07/08	9-Mar	4/10	4/11	4/12	6/13
<b>A. Public Education and Outreach</b>							
<b>A. 1 Distributed Paper Material</b>							
Include storm water articles in quarterly newsletter	X	X	X	X	X	X	
Prepare information for industrial/commercial packets							
Distribute information sheets in industrial/commercial packets	X						
<b>A. 1 Distributed Paper Material</b>							
Continue Distributing calendar with lawn sprinkling requirements	X	X	X	X	X	X	X
<b>A. 6 Other Public Education</b>							
Acquire information for posting on website	X						
Post storm water related information on Village Website	X	X	X	X	X	X	X
<b>B. Public Involvement and Participation</b>							
<b>B. 4 Public Hearing</b>							
Meet public notice requirements	X	X	X	X	X	X	X
<b>B. 4 Public Hearing</b>							
Hold public meeting to present NPDES Phase II Program	X						
Present ongoing program summary at annual public meeting	X	X	X	X	X	X	X
<b>B. 5 Volunteer Monitoring</b>							
Post Village Hall phone number for storm-related complaints	X	X	X	X	X	X	X
<b>C. Illicit Discharge Detection and Elimination</b>							
<b>C. 1 Storm sewer map preparation</b>							
Review existing storm sewer and outfall mapping	X				X	X	X
Compile as-built drawings	X					X	X
Begin updating storm sewer atlas and outfalls	X	X	X	X	X	X	X
<b>C. 2 Regulatory Control Program</b>							
Review existing ordinance language	X				X	X	X
Revise ordinance as needed	X		X	X	X	X	X
Adopt ordinance amendment							
Implement and enforce new ordinance provisions	X	X	X	X	X	X	X
<b>C. 3 Detection/Elimination Prioritization Plan</b>							
Develop policy and procedures for detection	X					X	X
Educate employees on new policy and procedures		X	X	X	X	X	X
<b>C. 5 Illicit source removal procedures</b>							
Notify citizens of West Central Municipal Conference on hazardous waste disposal	X	X	X	X	X	X	X
<b>C. 7 Visual Dry Weather Screening</b>							
Prioritize areas for dry weather screening	X						
Begin dry weather screening activities							
Continue dry weather screening activities	X	X	X	X	X	X	
<b>C. 9 Public Notification</b>							
Post info in newsletter about illicit discharges	X						
Post info on Village website about illicit discharges		X	X	X	X	X	
Distribute commercial/industrial informational packet	X						
<b>Construction Site Runoff Control</b>							
<b>D. 1 Regulatory Control Program</b>							
Develop an erosion control ordinance for sites > 1 acre	X						

Develop an erosion control ordinance for sites < 1 acre	X						
Adopt new/revised ordinance							
Implement and enforce new ordinance	X	X	X	X	X	X	X
<b>D. 2 Erosion and Sediment Control BMPs</b>							
Develop list of minimum BMPs	X						
Require and enforce new ordinance	X	X	X	X	X	X	X
<b>D. 4 Site Plan Review Procedures</b>							
Establish and document procedure for site plan review	X						
Continue revised procedures for site plan review		X	X	X	X	X	X
<b>D. 5 Public Information Handling Procedures</b>							
Publish public input phone number, establish documentation	X						
Continue to publish phone number for public input	X	X	X	X	X	X	
<b>D. 6 Site Inspections/Enforcement Procedures</b>							
Establish /document inspection guidelines, develop checklist	X						
Educate inspectors on proper inspection techniques		X	X	X	X	X	X
<b>D. 6 Site Inspections/Enforcement Procedures</b>							
Develop new ordinance for site inspection/enforcement	X						
Adopt new/revised ordinance			X				
Implement and enforce new ordinance	X	X		X	X	X	X
<b>E. Post-Construction Runoff Control</b>							
<b>E. 2 Regulatory Control Runoff</b>							
Develop new ordinance for control of post-construction run-off	X						
Adopt new/revised ordinance							
Implement and enforce new ordinance	X	X	X	X	X	X	X
<b>E. 3 Long Term O&amp;M Procedures</b>							
Inventory areas for needed & existing BMPs	X						
Update BMP maintenance schedule		X	X	X	X	X	
<b>E. 4 Pre-Construction Review of BMP Designs</b>							
Establish and document procedure for site plan review	X						
Continue revised procedures for site plan review		X	X	X	X	X	X
<b>E. 5 Site Inspections During Construction</b>							
Establish construction inspection guidelines, develop checklist	X						X
Educate inspectors on proper inspection techniques		X	X	X	X	X	X
<b>E. 6 Post Construction Inspections</b>							
Establish post-const. inspection guidelines, develop checklist	X						
Educate inspectors on proper inspection techniques		X	X	X	X	X	X
<b>F. Pollution Prevention/Good Housekeeping</b>							
<b>F. 1 Employee Training Program</b>							
Compile educational materials for municipal employees	X						
Conduct employee training sessions		X	X	X	X	X	X
<b>F. 2 Inspection and Maintenance Program</b>							
Review schedule for catch basin cleaning and revise	X						X
Continue catch basin cleaning program	X	X		X	X	X	X
<b>F. 2 Inspection and Maintenance Program</b>							
Review existing street sweeping program	time a week 4/1 to	X		X			
Continue street sweeping program	X	X	X	X	X	X	X
<b>F. 3 Muni Operations Storm Water Control</b>							
Inventory maintenance facilities and pollution prevention	X						
Determine and schedule upgrades at maintenance facilities		X	X	X	X	X	X
<b>F. 4 Muni Operations Waste Disposal</b>							



Inventory facilities that handle hazardous waste	X						
Create spill prevention plan and distribute to employees		X	X		X	X	X
F. 6 Other Municipal Operations Controls							
Review and record existing salt storage procedures	combined sewer area						
Evaluate salt storage and application options	X						
Make any changes necessary	X			X	X	X	X



# Illinois Environmental Protection Agency

Bureau of Water • 1021 N. Grand Avenue E. • P.O. Box 19276 • Springfield • Illinois • 62794-9276

## Division of Water Pollution Control ANNUAL FACILITY INSPECTION REPORT

for NPDES Permit for Storm Water Discharges from Separate Storm Sewer Systems (MS4)

*This fillable form may be completed online, a copy saved locally, printed and signed before it is submitted to the Compliance Assurance Section at the above address. Complete each section of this report.*

Report Period: From March, 2013 To March, 2014

Permit No. ILR40 00208

### MS4 OPERATOR INFORMATION: (As it appears on the current permit)

Name: Village of Harwood Heights Mailing Address 1: 7300 W. Wilson  
Mailing Address 2: County: Cook  
City: Harwood Heights State: IL Zip: 60706 Telephone: 708-867-7206  
Contact Person: George Assimakopoulos Email Address: george444@comcast.net  
(Person responsible for Annual Report)

### Name(s) of governmental entity(ies) in which MS4 is located: (As it appears on the current permit)

Village of Harwood Heights

### THE FOLLOWING ITEMS MUST BE ADDRESSED.

A. Changes to best management practices (check appropriate BMP change(s) and attach information regarding change(s) to BMP and measurable goals.)

- |   |  |
|---|--|
| 1. Public Education and Outreach <input type="checkbox"/>             | 4. Construction Site Runoff Control <input type="checkbox"/>       |
| 2. Public Participation/Involvement <input type="checkbox"/>          | 5. Post-Construction Runoff Control <input type="checkbox"/>       |
| 3. Illicit Discharge Detection & Elimination <input type="checkbox"/> | 6. Pollution Prevention/Good Housekeeping <input type="checkbox"/> |

B. Attach the status of compliance with permit conditions, an assessment of the appropriateness of your identified best management practices and progress towards achieving the statutory goal of reducing the discharge of pollutants to the MEP, and your identified measurable goals for each of the minimum control measures.

C. Attach results of information collected and analyzed, including monitoring data, if any during the reporting period.

D. Attach a summary of the storm water activities you plan to undertake during the next reporting cycle (including an implementation schedule.)

E. Attach notice that you are relying on another government entity to satisfy some of your permit obligations (if applicable).

F. Attach a list of construction projects that your entity has paid for during the reporting period.

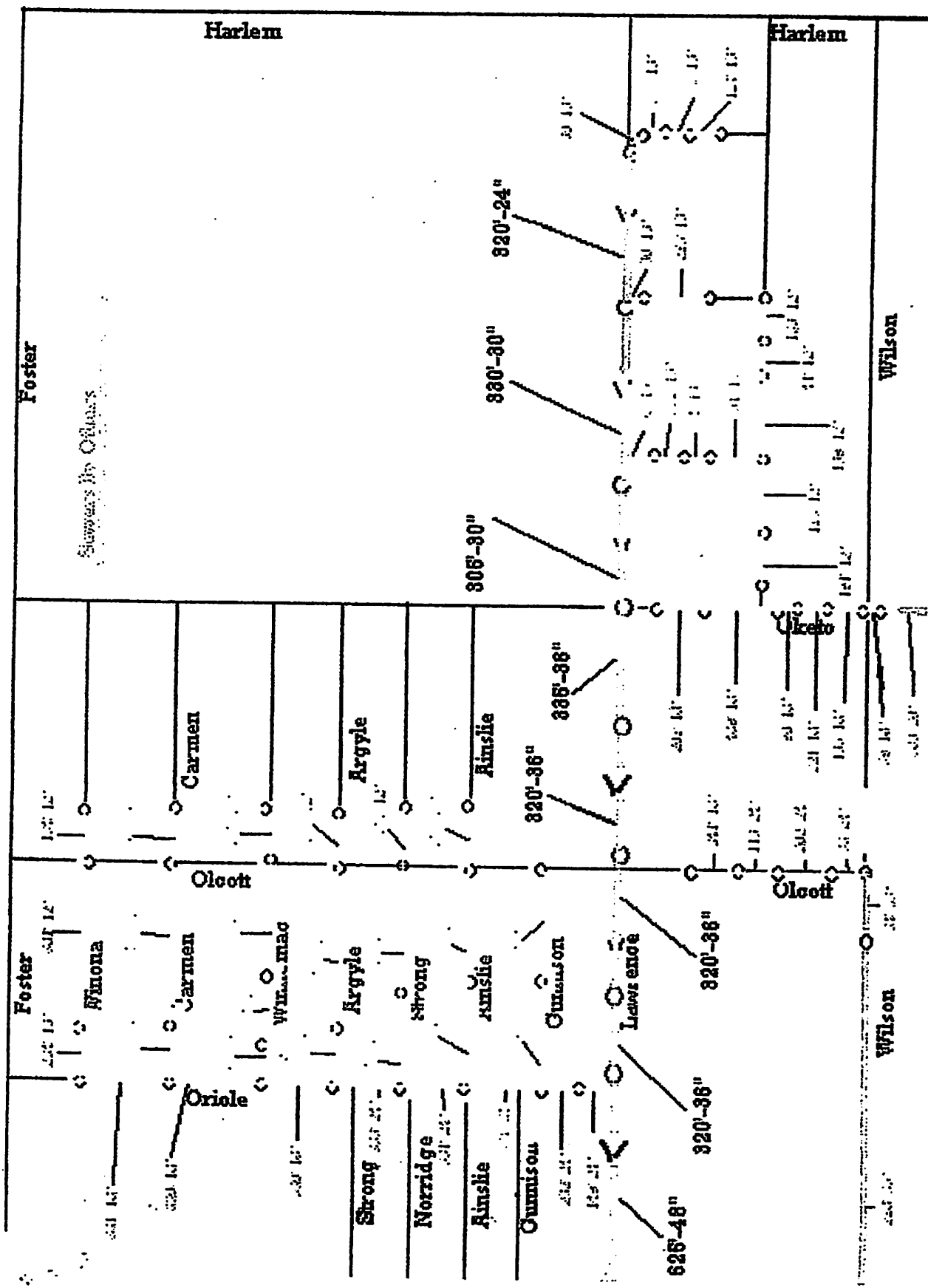
**Any person who knowingly makes a false, fictitious, or fraudulent material statement, orally or in writing, to the Illinois EPA commits a Class 4 felony. A second or subsequent offense after conviction is a Class 3 felony. (415 ILCS 5/44(h))**

George  
Owner Signature:  
George Assimakopoulos  
Printed Name:

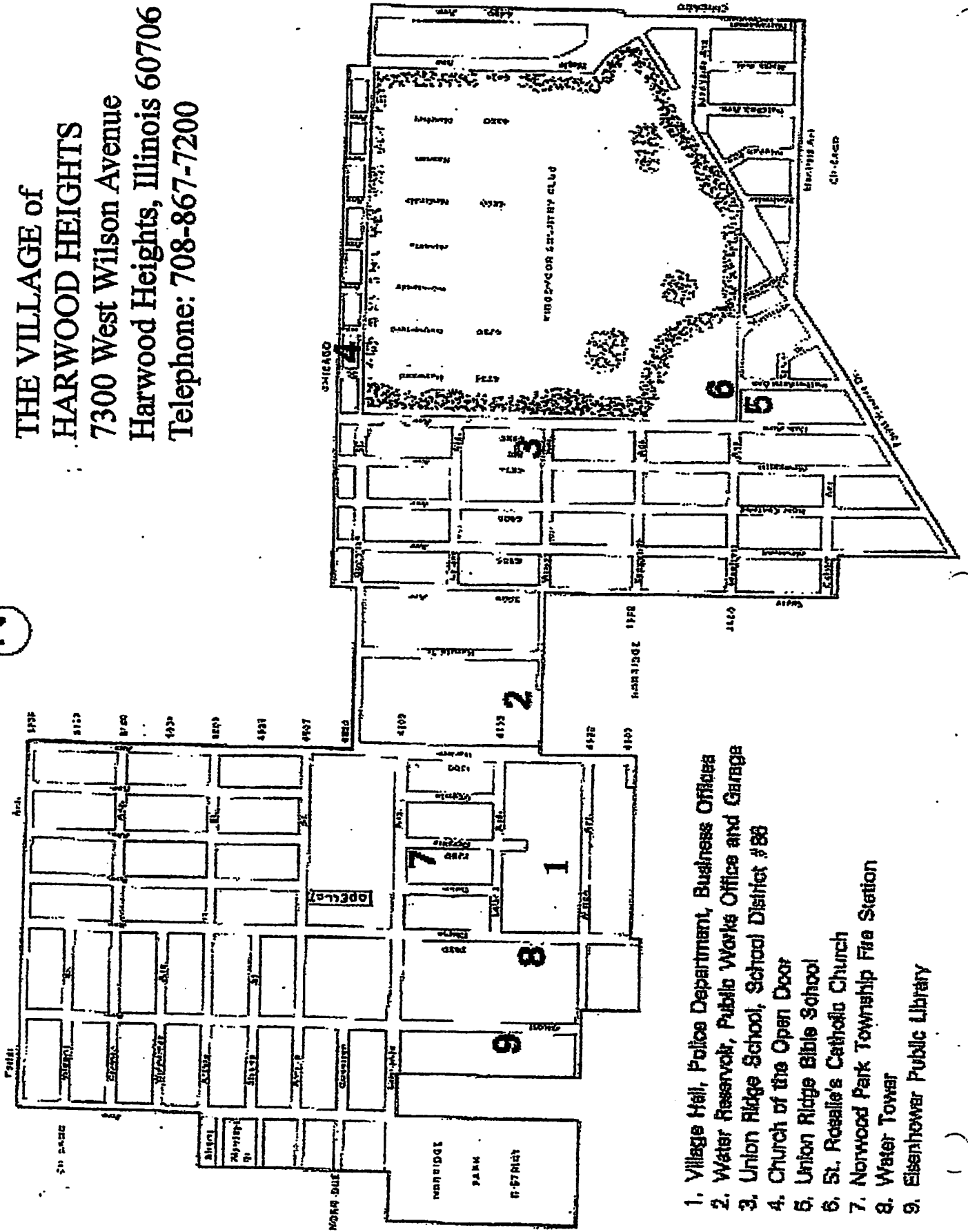
8-14-14  
Date:  
8-14-14  
Title:

EMAIL COMPLETED FORM TO: [epa.ms4annualinsp@illinois.gov](mailto:epa.ms4annualinsp@illinois.gov)

or Mail to: ILLINOIS ENVIRONMENTAL PROTECTION AGENCY  
WATER POLLUTION CONTROL  
COMPLIANCE ASSURANCE SECTION #19  
1021 NORTH GRAND AVENUE EAST  
POST OFFICE BOX 19276  
SPRINGFIELD, ILLINOIS 62794-9276



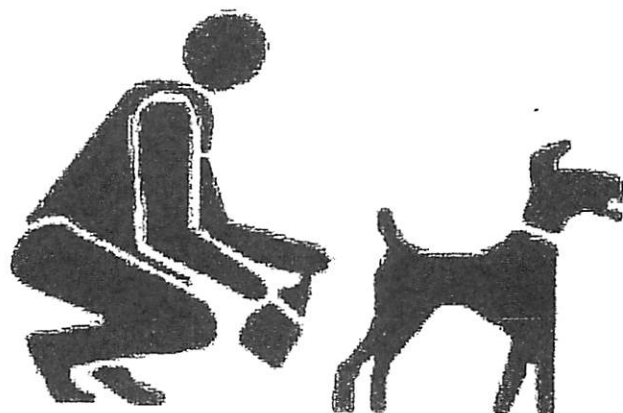
**THE VILLAGE of  
HARWOOD HEIGHTS**  
7300 West Wilson Avenue  
Harwood Heights, Illinois 60706  
Telephone: 708-867-7200



1. Village Hall, Police Department, Business Offices
2. Water Reservoir, Public Works Office and Garage
3. Union Ridge School, School District #88
4. Church of the Open Door
5. Union Ridge Bible School
6. St. Rosalie's Catholic Church
7. Norwood Park Township Fire Station
8. Water Tower
9. Eisenhower Public Library



# Be Responsible!!!



## Please...Clean up after your dog.

Be proud to be seen picking up after your dog. Picking up shows pride in your community, in yourself, and in your dog. You set a great example for others, you keep our village clean and you help create a brighter future for dogs and their people.

### VILLAGE OF HARWOOD HEIGHTS - VILLAGE CODE 6.08.030, SECTION D- REMOVAL OF FECES

The owner of every animal shall be responsible for the removal and sanitary disposition of any feces deposited by his/her animal anywhere in the village. When accompanying the animal outside his/her property, the owner shall have on his/her person suitable means for the removal of such feces and a depository for the transmission of feces to a receptacle located upon property owned or possessed by such person. The legally blind which are being led outside of their property by a guide dog shall be exempt from this section. No dog, cat, or other animal shall be walked in an area where signs prohibit such action. Please respect your fellow residents and show common courtesy when walking your dog. Any person in violation will be ticketed.



## Specifications

3N806

- PROJECT:** Stormwater Lift Station  
Oriole Avenue Pump Station  
Harwood Heights, Illinois
- Application:** Duplex Concrete Lift Station
- Model:** (2) Hydromatic Model S3SD300M3/4-4 Submersible Pump with 50' Length of cords.
- Capacity:** 137.5 GPM @ 25 FT. TDH with 3" discharge.
- Motor(s):** 3 HP, 1750 RPM, 460 Voltage, 3 Phase, 60 Hz., 1.2 S.F.
- Control:** (1) Mercury level switch with 50' cords.
- Control Panel:** Furnished  
Control panel to include magnetic starters, circuit breakers, run lights, H-O-A switches, electric alternator, panel disconnect switch, etms, heat & seal failure sensors, duplex convenience outlet all in a pole mounted enclosure.
- Alarm:** Alarm Light with Dim-Glow and Alarm Battery Back-Up.
- Basin:** 5'-0" dia. x 20'-0" deep Concrete with MTM Lift-Out System.  
(Concrete, Piping & Valves By Contractor)
- Accessories:** (1) Duplex Aluminum Wet Well Access Hatch Model APD300-24x38  
(2) 3" MTM Base/discharge Elbow Assembly  
(2) 3" MTM Sealing Flange Assembly  
(2) 20' Lengths of 3/16" Stainless Steel Lifting Chain  
(8) 10' Lengths of 1.5" Stainless Steel Guiderails  
(1) Duplex Set of Lower Guiderail Supports  
(1) Duplex Set of Intermediate Guiderail Supports  
(1) Duplex Set of Upper Guiderail Supports  
(1) Stainless Steel 4 Float Mounting Bracket  
(1) Stainless Steel Chain & 10 lb. Cast Iron Anchor Float Mounting System  
(1) Heat & Seal Failure Probes (per pump)

### METROPOLITAN PUMP COMPANY

*division of Metropolitan Industries, Inc.*

37 Forestwood Drive

Romeoville, Illinois 60446

phone: (815)886-9200 fax: (815)886-4573

**The Village of  
Harwood  
Heights**

*Dedicated to Serving People with Pride*

Mayor  
**ARLENE C. JEZIERNY**

Village Clerk  
**MARCIA L. FOLLOWY**

Trustees  
**MARK DOBRZYCKI**  
**MICHAEL J. GADZINSKI**  
**DEMETRIOS MOUGOLIAS**  
**THERESE SCHUEPFER**  
**LAWRENCE R. STEINER**  
**LESTER SZLENDAK**

**Dear Allan Keller:**

**The Village of Harwood Heights is requesting a waiver for the MS4 NPDES Phase II Storm Water Program. The population in our community is only 8,661. Our permit # is ILR4010208. If there is any question please feel free to call me at 708-867-7200**

**Thank you,**

**George Assimakopoulos**

**Village of Harwood Hts.**



# Village of Harwood Heights

## NPDES Phase 11

### National Pollutant Discharge Elimination System

Activity	06/07	9-Mar	4/10	4/11	4/12	6/13	8/14
<b>A. Public Education and Outreach</b>							
<b>A. 1 Distributed Paper Material</b>							
Include storm water articles in quarterly newsletter	X	X	X	X	X		
Prepare information for industrial/commercial packets	X						
Distribute information sheets in industrial/commercial packets	X						
<b>A. 1 Distributed Paper Material</b>							
Continue Distributing calendar with lawn sprinkling requirements	X	X	X	X	X	X	X
<b>A. 6 Other Public Education</b>							
Acquire information for posting on website	X						
Post storm water related information on Village Website	X	X	X	X	X	X	
<b>B. Public Involvement and Participation</b>							
<b>B. 4 Public Hearing</b>							
Meet public notice requirements	X	X	X	X	X	X	X
<b>B. 4 Public Hearing</b>							
Hold public meeting to present NPDES Phase II Program							
Present ongoing program summary at annual public meeting	X	X	X	X	X	X	X
<b>B. 5 Volunteer Monitoring</b>							
Post Village Hall phone number for storm-related complaints	X	X	X	X	X	X	X
<b>C. Illicit Discharge Detection and Elimination</b>							
<b>C. 1 Storm sewer map preparation</b>							
Review existing storm sewer and outfall mapping				X	X	X	X
Compile as-built drawings	X				X	X	X
Begin updating storm sewer atlas and outfalls	X	X	X	X	X	X	X
<b>C. 2 Regulatory Control Program</b>							
Review existing ordinance language				X	X	X	X
Revise ordinance as needed	X	X	X	X	X	X	X
Adopt ordinance amendment	X						
Implement and enforce new ordinance provisions	X	X	X	X	X	X	X
<b>C. 3 Detection/Elimination Prioritization Plan</b>							
Develop policy and procedures for detection	X				X	X	X
Educate employees on new policy and procedures		X	X	X	X	X	X
<b>C. 5 Illicit source removal procedures</b>							
Notify citizens of West Central Municipal Conference on hazardous waste disposal	X	X	X	X	X	X	X
<b>C. 7 Visual Dry Weather Screening</b>							
Prioritize areas for dry weather screening	X						
Begin dry weather screening activities	X						
Continue dry weather screening activities	X	X	X	X	X		
<b>C. 9 Public Notification</b>							
Post info in newsletter about illicit discharges	X						
Post info on Village website about illicit discharges	X	X	X	X	X		
Distribute commercial/industrial informational packet	X						
<b>Construction Site Runoff Control</b>							
<b>D. 1 Regulatory Control Program</b>							
Develop an erosion control ordinance for sites > 1 acre	X						

Develop an erosion control ordinance for sites < 1 acre	K							
Adopt new/revised ordinance	X							
Implement and enforce new ordinance		X	X	X	X	X	X	X
<b>D. 2 Erosion and Sediment Control BMPs</b>								
Develop list of minimum BMPs	K							
Require and enforce new ordinance	X	X	X	X	X	X	X	X
<b>D. 4 Site Plan Review Procedures</b>								
Establish and document procedure for site plan review	X							
Continue revised procedures for site plan review		X	X	X	X	X	X	X
<b>D. 5 Public Information Handling Procedures</b>								
Publish public input phone number, establish documentation								
Continue to publish phone number for public input	X	X	X	X	X			
<b>D. 6 Site Inspections/Enforcement Procedures</b>								
Establish /document inspection guidelines, develop checklist	X							
Educate inspectors on proper inspection techniques		X	X	X	X	X	X	X
<b>D. 6 Site Inspections/Enforcement Procedures</b>								
Develop new ordinance for site inspection/enforcement	K							
Adopt new/revised ordinance	X	X						
Implement and enforce new ordinance	X		X	X	X	X	X	X
<b>E. Post-Construction Runoff Control</b>								
<b>E. 2 Regulatory Control Runoff</b>								
Develop new ordinance for control of post-construction run-off	K							
Adopt new/revised ordinance	X							
Implement and enforce new ordinance		X	X	X	X	X	X	X
<b>E. 3 Long Term O&amp;M Procedures</b>								
Inventory areas for needed & existing BMPs	X							
Update BMP maintenance schedule		X	X	X	X			
<b>E. 4 Pre-Construction Review of BMP Designs</b>								
Establish and document procedure for site plan review	X							
Continue revised procedures for site plan review		X	X	X	X	X	X	X
<b>E. 5 Site Inspections During Construction</b>								
Establish construction inspection guidelines, develop checklist	X					X	X	
Educate inspectors on proper inspection techniques		X	X	X	X	X	X	X
<b>E. 6 Post Construction Inspections</b>								
Establish post-const. inspection guidelines, develop checklist	X							
Educate inspectors on proper inspection techniques		X	X	X	X	X	X	X
<b>F. Pollution Prevention/Good Housekeeping</b>								
<b>F. 1 Employee Training Program</b>								
Compile educational materials for municipal employees	X							
Conduct employee training sessions		X	X	X	X	X		
<b>F. 2 Inspection and Maintenance Program</b>								
Review schedule for catch basin cleaning and revise						X		
Continue catch basin cleaning program	X		X	X	X	X	X	X
<b>F. 2 Inspection and Maintenance Program</b>								
Review existing street sweeping program	time	4/1 to	X					
Continue street sweeping program	X	X	X	X	X	X	X	X
<b>F. 3 Muni Operations Storm Water Control</b>								
Inventory maintenance facilities and pollution prevention	X							
Determine and schedule upgrades at maintenance facilities		X	X	X	X	X	X	X
<b>F. 4 Muni Operations Waste Disposal</b>								

Inventory facilities that handle hazardous waste	X						
Create spill prevention plan and distribute to employees		X		X	X	X	
F. 6 Other Municipal Operations Controls							
Review and record existing salt storage procedures							
Evaluate salt storage and application options	K						
Make any changes necessary	X		X	X	X	X	X



# Illinois Environmental Protection Agency

Bureau of Water • 1021 N. Grand Avenue E. • P.O. Box 19276 • Springfield • Illinois • 62794-9276

## Division of Water Pollution Control ANNUAL FACILITY INSPECTION REPORT

### for NPDES Permit for Storm Water Discharges from Separate Storm Sewer Systems (MS4)

*This fillable form may be completed online, a copy saved locally, printed and signed before it is submitted to the Compliance Assurance Section at the above address. Complete each section of this report.*

Report Period: From March, 2014 To March, 2015

Permit No. ILR40 00208

#### MS4 OPERATOR INFORMATION: (As it appears on the current permit)

Name: Village of Harwood Heights Mailing Address 1: 7300 W. Wilson Ave  
Mailing Address 2: County: Cook  
City: Harwood Heights State: IL Zip: 60706 Telephone: 708-867-7206  
Contact Person: George Assimakopoulos Email Address: george444@harwoodheights.org  
(Person responsible for Annual Report)

#### Name(s) of governmental entity(ies) in which MS4 is located: (As it appears on the current permit)

Village of Harwood Heights

#### THE FOLLOWING ITEMS MUST BE ADDRESSED.

A. Changes to best management practices (check appropriate BMP change(s) and attach information regarding change(s) to BMP and measurable goals.)

- |   |  |
|---|--|
| 1. Public Education and Outreach <input type="checkbox"/>             | 4. Construction Site Runoff Control <input type="checkbox"/>       |
| 2. Public Participation/Involvement <input type="checkbox"/>          | 5. Post-Construction Runoff Control <input type="checkbox"/>       |
| 3. Illicit Discharge Detection & Elimination <input type="checkbox"/> | 6. Pollution Prevention/Good Housekeeping <input type="checkbox"/> |

B. Attach the status of compliance with permit conditions, an assessment of the appropriateness of your identified best management practices and progress towards achieving the statutory goal of reducing the discharge of pollutants to the MEP, and your identified measurable goals for each of the minimum control measures.

C. Attach results of information collected and analyzed, including monitoring data, if any during the reporting period.

D. Attach a summary of the storm water activities you plan to undertake during the next reporting cycle (including an implementation schedule.)

E. Attach notice that you are relying on another government entity to satisfy some of your permit obligations (if applicable).

F. Attach a list of construction projects that your entity has paid for during the reporting period.

**Any person who knowingly makes a false, fictitious, or fraudulent material statement, orally or in writing, to the Illinois EPA commits a Class 4 felony. A second or subsequent offense after conviction is a Class 3 felony. (415 ILCS 5/44(h))**

George Assimakopoulos  
Owner Signature:

5-28-15  
Date:

George Assimakopoulos  
Printed Name:

5-28-15  
Title:

EMAIL COMPLETED FORM TO: [epa.ms4annualinsp@illinois.gov](mailto:epa.ms4annualinsp@illinois.gov)

or Mail to: ILLINOIS ENVIRONMENTAL PROTECTION AGENCY  
WATER POLLUTION CONTROL  
COMPLIANCE ASSURANCE SECTION #19  
1021 NORTH GRAND AVENUE EAST  
POST OFFICE BOX 19276  
SPRINGFIELD, ILLINOIS 62794-9276

This Agency is authorized to require this information under Section 4 and Title X of the Environmental Protection Act (415 ILCS 5/4, 5/39). Failure to disclose this information may result in a civil penalty of not to exceed \$50,000 for the violation and an additional civil penalty of not to exceed \$10,000 for each day during which the violation continues (415 ILCS 5/42) and may also prevent this form from being processed and could result in your application being denied. This form has been approved by the Forms Management Center.

The Village of  
**Harwood  
Heights**

Dedicated to Serving People with Pride

Mayor  
ARLENE C. JEZIERNY

Village Clerk  
MARCIA L. POLLOWY

Trustees  
MARK DOBRZYCKI  
MICHAEL J. GADZINSKI  
DEMETRIOS MOUGOLIAS  
THERESE SCHUEPFER  
LAWRENCE R. STEINER  
LESTER SZLENDAK

Dear Allan Keller:

The Village of Harwood Heights is requesting a waiver for the MS4 NPDES Phase II Storm Water Program. The population in our community is only 8,661. Our permit # is ILR4010208. If there is any question please feel free to call me at 708-867-7200

Thank you,

George Assimakopoulos

Village of Harwood Hts.



# Village of Harwood Heights

## NPDES Phase 11

### National Pollutant Discharge Elimination System

Activity	4/10.	4/11.	4/12.	6/13.	8/14.
<b>A. Public Education and Outreach</b>					
<b>A. 1 Distributed Paper Material</b>					
Include storm water articles in quarterly newsletter	X	X	X		
Prepare information for industrial/commercial packets					
Distribute information sheets in industrial/commercial packets					
<b>A. 1 Distributed Paper Material</b>					
Continue Distributing calendar with lawn sprinkling requirements	X	X	X	X	X
<b>A. 6 Other Public Education</b>					
Acquire information for posting on website					
Post storm water related information on Village Website	X	X	X	X	
<b>B. Public Involvement and Participation</b>					
<b>B. 4 Public Hearing</b>					
Meet public notice requirements	X	X	X	X	X
<b>B. 4 Public Hearing</b>					
Hold public meeting to present NPDES Phase II Program					
Present ongoing program summary at annual public meeting	X	X	X	X	X
<b>B. 5 Volunteer Monitoring</b>					
Post Village Hall phone number for storm-related complaints	X	X	X	X	X
<b>C. Illicit Discharge Detection and Elimination</b>					
<b>C. 1 Storm sewer map preparation</b>					
Review existing storm sewer and outfall mapping		X	X	X	X
Compile as-built drawings			X	X	X
Begin updating storm sewer atlas and outfalls	X	X	X	X	X
<b>C. 2 Regulatory Control Program</b>					
Review existing ordinance language		X	X	X	X
Revise ordinance as needed	X	X	X	X	X
Adopt ordinance amendment					
Implement and enforce new ordinance provisions	X	X	X	X	X
<b>C. 3 Detection/Elimination Prioritization Plan</b>					
Develop policy and procedures for detection			X	X	X
Educate employees on new policy and procedures	X	X	X	X	X
<b>C. 5 Illicit source removal procedures</b>					
Notify citizens of West Central Municipal Conference on hazardous waste disposal	X	X	X	X	X
<b>C. 7 Visual Dry Weather Screening</b>					
Prioritize areas for dry weather screening					
Begin dry weather screening activities					
Continue dry weather screening activities	X	X	X		
<b>C. 9 Public Notification</b>					
Post info in newsletter about illicit discharges					
Post info on Village website about illicit discharges	X	X	X		
Distribute commercial/industrial informational packet					
<b>Construction Site Runoff Control</b>					
<b>D. 1 Regulatory Control Program</b>					
Develop an erosion control ordinance for sites > 1 acre					

Develop an erosion control ordinance for sites < 1 acre					
Adopt new/revised ordinance					
Implement and enforce new ordinance	X	X	X	X	X
<b>D. 2 Erosion and Sediment Control BMPs</b>					
Develop list of minimum BMPs					
Require and enforce new ordinance	X	X	X	X	X
<b>D. 4 Site Plan Review Procedures</b>					
Establish and document procedure for site plan review					
Continue revised procedures for site plan review	X	X	X	X	X
<b>D. 5 Public Information Handling Procedures</b>					
Publish public input phone number, establish documentation					
Continue to publish phone number for public input	X	X	X		
<b>D. 6 Site Inspections/Enforcement Procedures</b>					
Establish /document inspection guidelines, develop checklist					
Educate inspectors on proper inspection techniques	X	X	X	X	X
<b>D. 6 Site Inspections/Enforcement Procedures</b>					
Develop new ordinance for site inspection/enforcement					
Adopt new/revised ordinance					
Implement and enforce new ordinance	X	X	X	X	X
<b>E. Post-Construction Runoff Control</b>					
<b>E. 2 Regulatory Control Runoff</b>					
Develop new ordinance for control of post-construction run-off					
Adopt new/revised ordinance					
Implement and enforce new ordinance	X	X	X	X	X
<b>E. 3 Long Term O&amp;M Procedures</b>					
Inventory areas for needed & existing BMPs					
Update BMP maintenance schedule	X	X	X		
<b>E. 4 Pre-Construction Review of BMP Designs</b>					
Establish and document procedure for site plan review					
Continue revised procedures for site plan review	X	X	X	X	X
<b>E. 5 Site Inspections During Construction</b>					
Establish construction inspection guidelines, develop checklist				X	X
Educate inspectors on proper inspection techniques	X	X	X	X	X
<b>E. 6 Post Construction Inspections</b>					
Establish post-const. inspection guidelines, develop checklist					
Educate inspectors on proper inspection techniques	X	X	X	X	X
<b>F. Pollution Prevention/Good Housekeeping</b>					
<b>F. 1 Employee Training Program</b>					
Compile educational materials for municipal employees					
Conduct employee training sessions	X	X	X	X	
<b>F. 2 Inspection and Maintenance Program</b>					
Review schedule for catch basin cleaning and revise				X	
Continue catch basin cleaning program	X	X	X	X	X
<b>F. 2 Inspection and Maintenance Program</b>					
Review existing street sweeping program	X				
Continue street sweeping program	X	X	X	X	X
<b>F. 3 Muni Operations Storm Water Control</b>					
Inventory maintenance facilities and pollution prevention					
Determine and schedule upgrades at maintenance facilities	X	X	X	X	X
<b>F. 4 Muni Operations Waste Disposal</b>					

Inventory facilities that handle hazardous waste					
Create spill prevention plan and distribute to employees		X	X	X	
F. 6 Other Municipal Operations Controls					
Review and record existing salt storage procedures					
Evaluate salt storage and application options					
Make any changes necessary	X	X	X	X	X

## Specifications

3N806,

- PROJECT:** Stormwater Lift Station  
Oriole Avenue Pump Station  
Harwood Heights, Illinois
- Application:** Duplex Concrete Lift Station
- Model:** (2) Hydromatic Model S3SD300M3/4-4 Submersible Pump with 50' Length of cords.
- Capacity:** 137.5 GPM @ 25 FT. TDH with 3" discharge.
- Motor(s):** 3 HP, 1750 RPM, 460 Voltage, 3 Phase, 60 Hz., 1.2 S.F.
- Control:** (1) Mercury level switch with 50' cords.
- Control Panel:** Furnished  
Control panel to include magnetic starters, circuit breakers, run lights, H-O-A switches, electric alternator, panel disconnect switch, etms, heat & seal failure sensors, duplex convenience outlet all in a pole mounted enclosure.
- Alarm:** Alarm Light with Dim-Glow and Alarm Battery Back-Up.
- Basin:** 5'-0" dia. x 20'-0" deep Concrete with MTM Lift-Out System.  
(Concrete, Piping & Valves By Contractor)
- Accessories:** (1) Duplex Aluminum Wet Well Access Hatch Model APD300-24x38  
(2) 3" MTM Base/discharge Elbow Assembly  
(2) 3" MTM Sealing Flange Assembly  
(2) 20' Lengths of 3/16" Stainless Steel Lifting Chain  
(8) 10' Lengths of 1.5" Stainless Steel Guiderails  
(1) Duplex Set of Lower Guiderail Supports  
(1) Duplex Set of Intermediate Guiderail Supports  
(1) Duplex Set of Upper Guiderail Supports  
(1) Stainless Steel 4 Float Mounting Bracket  
(1) Stainless Steel Chain & 10 lb. Cast Iron Anchor Float Mounting System  
(1) Heat & Seal Failure Probes (per pump)

### METROPOLITAN PUMP COMPANY

*division of Metropolitan Industries, Inc.*

37 Forestwood Drive

Romeoville, Illinois 60446

phone: (815)886-9200 fax: (815)886-4573

# Chicago, Illinois, United States

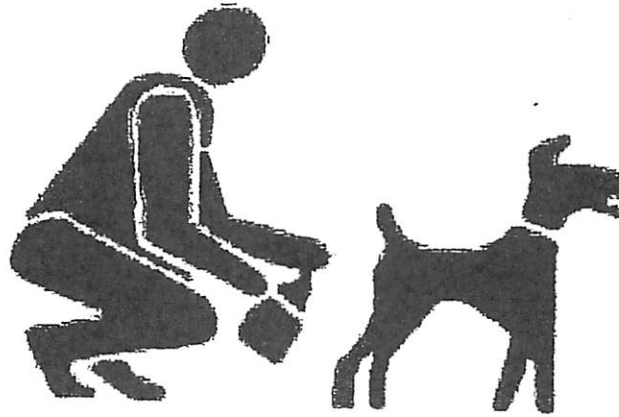


Copyright © 2004 Mapbox Corp. and its suppliers. All rights reserved. <http://www.mapbox.com/privacy/>  
 Mapbox Data Technology, Inc. All rights reserved. © 2004 NAVTEQ. All rights reserved. This data hereby

tion taken with permission from Canadian authorities © Her Majesty the Queen in Right of Canada.



# Be Responsible!!!



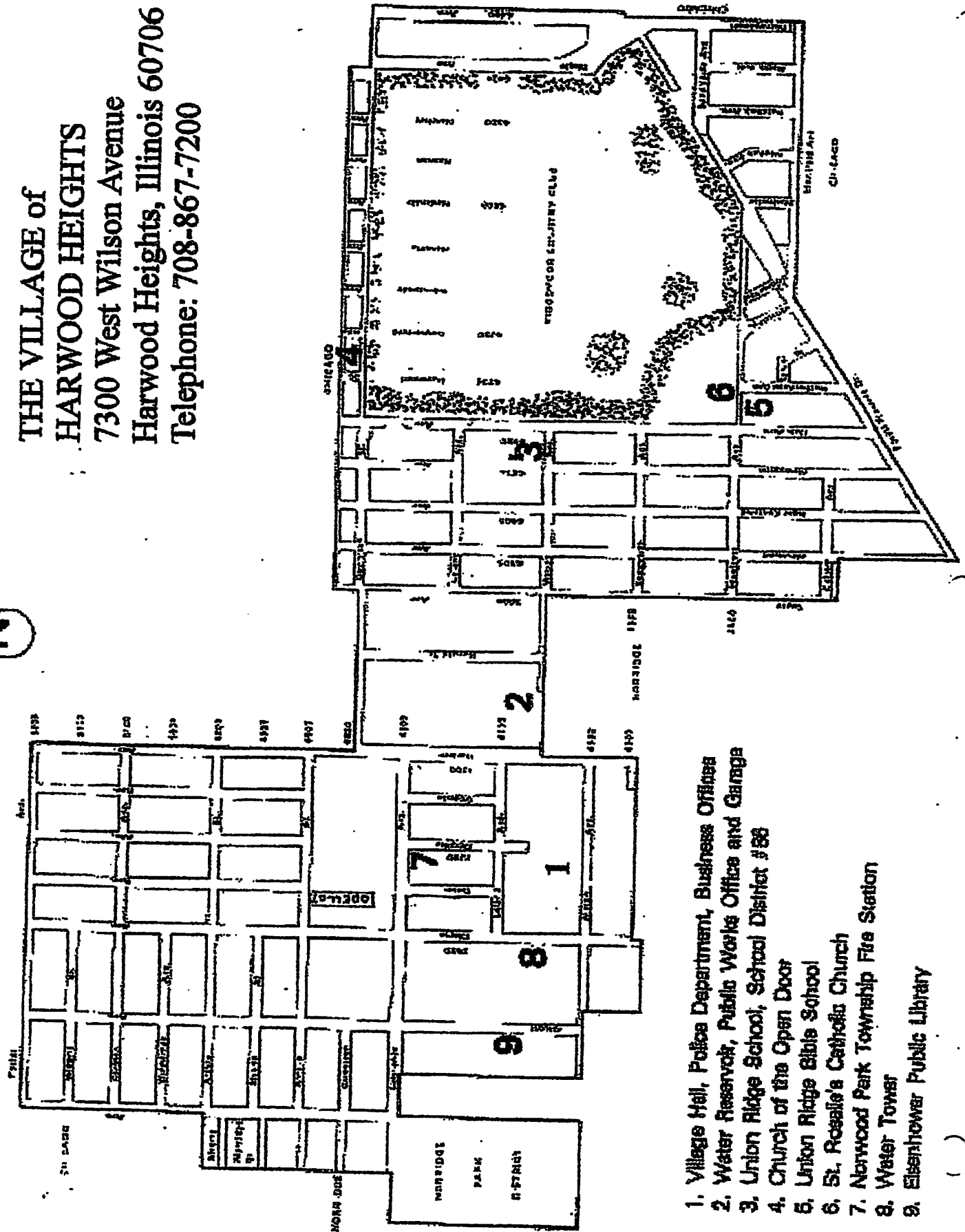
## Please...Clean up after your dog.

Be proud to be seen picking up after your dog. Picking up shows pride in your community, in yourself, and in your dog. You set a great example for others, you keep our village clean and you help create a brighter future for dogs and their people.

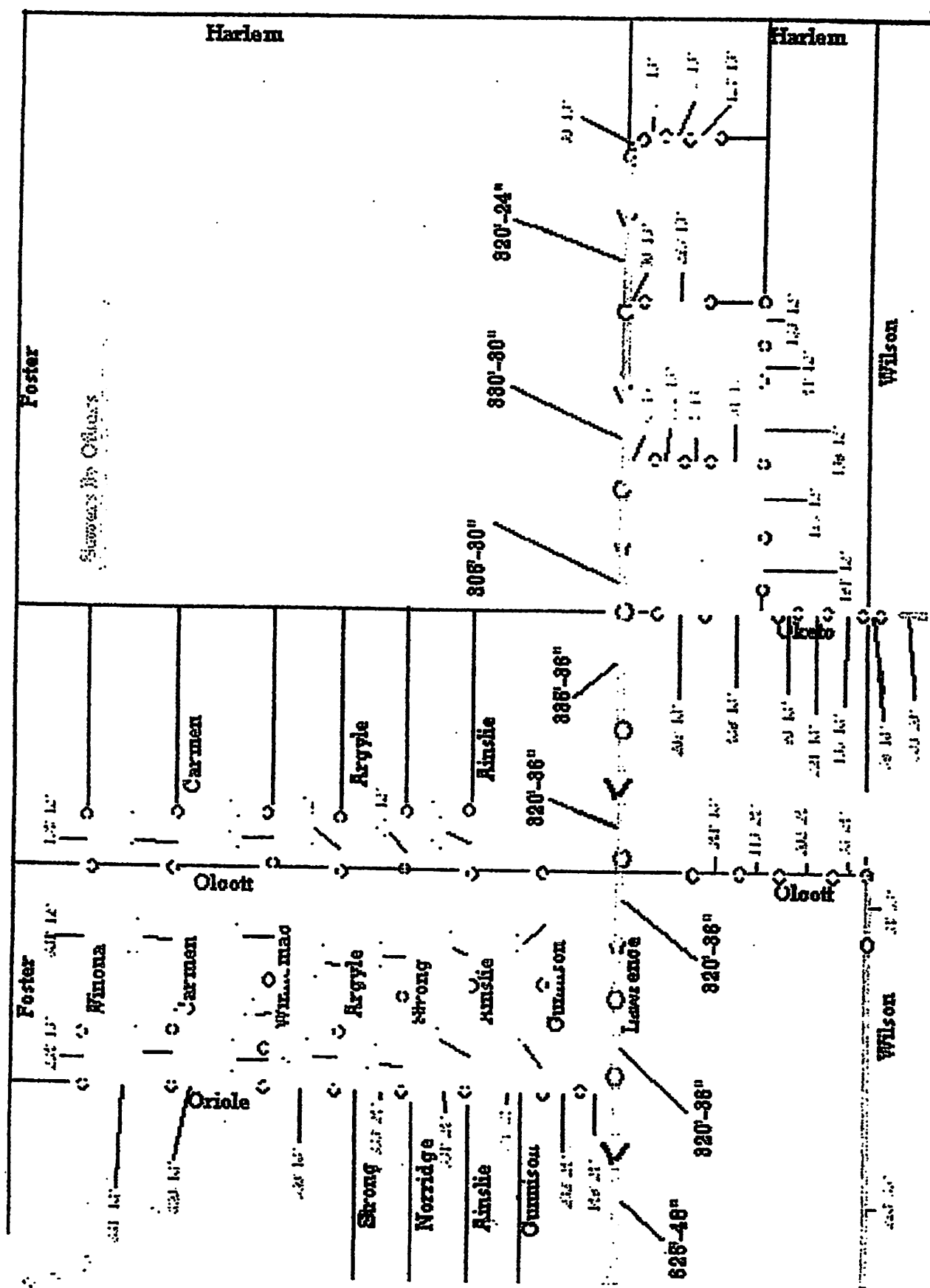
### VILLAGE OF HARWOOD HEIGHTS - VILLAGE CODE 6.08.030, SECTION D- REMOVAL OF FECES

The owner of every animal shall be responsible for the removal and sanitary disposition of any feces deposited by his/her animal anywhere in the village. When accompanying the animal outside his/her property, the owner shall have on his/her person suitable means for the removal of such feces and a depository for the transmission of feces to a receptacle located upon property owned or possessed by such person. The legally blind which are being led outside of their property by a guide dog shall be exempt from this section. No dog, cat, or other animal shall be walked in an area where signs prohibit such action. Please respect your fellow residents and show common courtesy when walking your dog. Any person in violation will be ticketed.

**THE VILLAGE of  
HARWOOD HEIGHTS**  
7300 West Wilson Avenue  
Harwood Heights, Illinois 60706  
Telephone: 708-867-7200



1. Village Hall, Police Department, Business Offices
2. Water Reservoir, Public Works Office and Garage
3. Union Ridge School, School District #58
4. Church of the Open Door
5. Union Ridge Elbie School
6. St. Rosalie's Catholic Church
7. Norwood Park Township Fire Station
8. Water Tower
9. Eisenhower Public Library





# Illinois Environmental Protection Agency

Bureau of Water • 1021 N. Grand Avenue E. • P.O. Box 19276 • Springfield • Illinois • 62794-9276

## Division of Water Pollution Control ANNUAL FACILITY INSPECTION REPORT

for NPDES Permit for Storm Water Discharges from Separate Storm Sewer Systems (MS4)

*This fillable form may be completed online, a copy saved locally, printed and signed before it is submitted to the Compliance Assurance Section at the above address. Complete each section of this report.*

Report Period: From March, 2016 To March, 2017

Permit No. ILR40 00208

### MS4 OPERATOR INFORMATION: (As it appears on the current permit)

Name: Village of Harwood Heights Mailing Address 1: 7300 W. Wilson Ave  
Mailing Address 2: County: Cook  
City: Harwood Heights State: IL Zip: 60706 Telephone: 708-867-7206  
Contact Person: George Assimakopoulos Email Address: george444@harwoodheights.org  
(Person responsible for Annual Report)

### Name(s) of governmental entity(ies) in which MS4 is located: (As it appears on the current permit)

Village of Harwood Heights

### THE FOLLOWING ITEMS MUST BE ADDRESSED.

A. Changes to best management practices (check appropriate BMP change(s) and attach information regarding change(s) to BMP and measurable goals.)

- |   |  |
|---|--|
| 1. Public Education and Outreach <input type="checkbox"/>             | 4. Construction Site Runoff Control <input type="checkbox"/>       |
| 2. Public Participation/Involvement <input type="checkbox"/>          | 5. Post-Construction Runoff Control <input type="checkbox"/>       |
| 3. Illicit Discharge Detection & Elimination <input type="checkbox"/> | 6. Pollution Prevention/Good Housekeeping <input type="checkbox"/> |

B. Attach the status of compliance with permit conditions, an assessment of the appropriateness of your identified best management practices and progress towards achieving the statutory goal of reducing the discharge of pollutants to the MEP, and your identified measurable goals for each of the minimum control measures.

C. Attach results of information collected and analyzed, including monitoring data, if any during the reporting period.

D. Attach a summary of the storm water activities you plan to undertake during the next reporting cycle (including an implementation schedule.)

E. Attach notice that you are relying on another government entity to satisfy some of your permit obligations (if applicable).

F. Attach a list of construction projects that your entity has paid for during the reporting period.

**Any person who knowingly makes a false, fictitious, or fraudulent material statement, orally or in writing, to the Illinois EPA commits a Class 4 felony. A second or subsequent offense after conviction is a Class 3 felony. (415 ILCS 5/44(h))**

George Assimakopoulos  
Owner Signature:

George Assimakopoulos  
Printed Name:

3-15-18  
Date:

Water & Sewer Foreman  
Title:

EMAIL COMPLETED FORM TO: [epa.ms4annualinsp@illinois.gov](mailto:epa.ms4annualinsp@illinois.gov)

or Mail to: ILLINOIS ENVIRONMENTAL PROTECTION AGENCY  
WATER POLLUTION CONTROL  
COMPLIANCE ASSURANCE SECTION #19  
1021 NORTH GRAND AVENUE EAST  
POST OFFICE BOX 19276  
SPRINGFIELD, ILLINOIS 62794-9276

This Agency is authorized to require this information under Section 4 and Title X of the Environmental Protection Act (415 ILCS 5/4, 5/33). Failure to disclose this information may result in: a civil penalty of not to exceed \$50,000 for the violation and an additional civil penalty of not to exceed \$10,000 for each day during which the violation continues (415 ILCS 5/42) and may also prevent this form from being processed and could result in your application being denied. This form has been approved by the Forms Management Center.

**The Village of  
Harwood  
Heights**

*Dedicated to Serving People with Pride*

Mayor  
**ARLENE C. JEZIERNY**

Village Clerk  
**MARCIA L. FOLLOWY**

Trustees  
**MARK DOBRZYCKI**  
**MICHAEL J. GADZINSKI**  
**DEMETRIOS MOUGOLIAS**  
**THERESE SCHUEPFER**  
**LAWRENCE R. STEINER**  
**LESTER SZLENDAK**

**Dear Allan Keller:**

**The Village of Harwood Heights is requesting a waiver for the MS4 NPDES Phase II Storm Water Program. The population in our community is only 8,661. Our permit # is ILR4010208. If there is any question please feel free to call me at 708-867-7200**

**Thank you,**

**George Assimakopoulos**

**Village of Harwood Hts.**



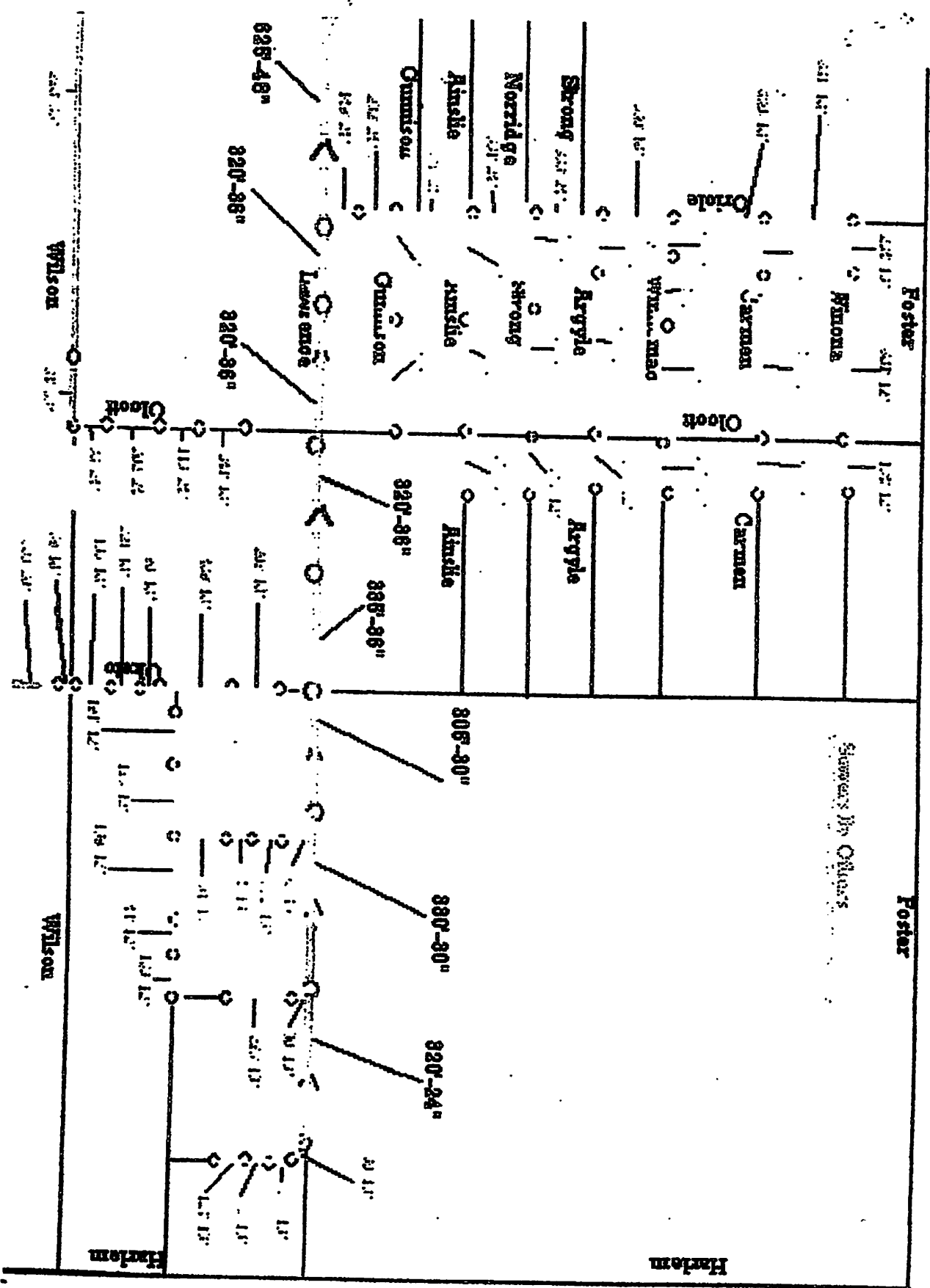
# Village of Harwood Heights NPDES Phase 11

## National Pollutant Discharge Elimination System

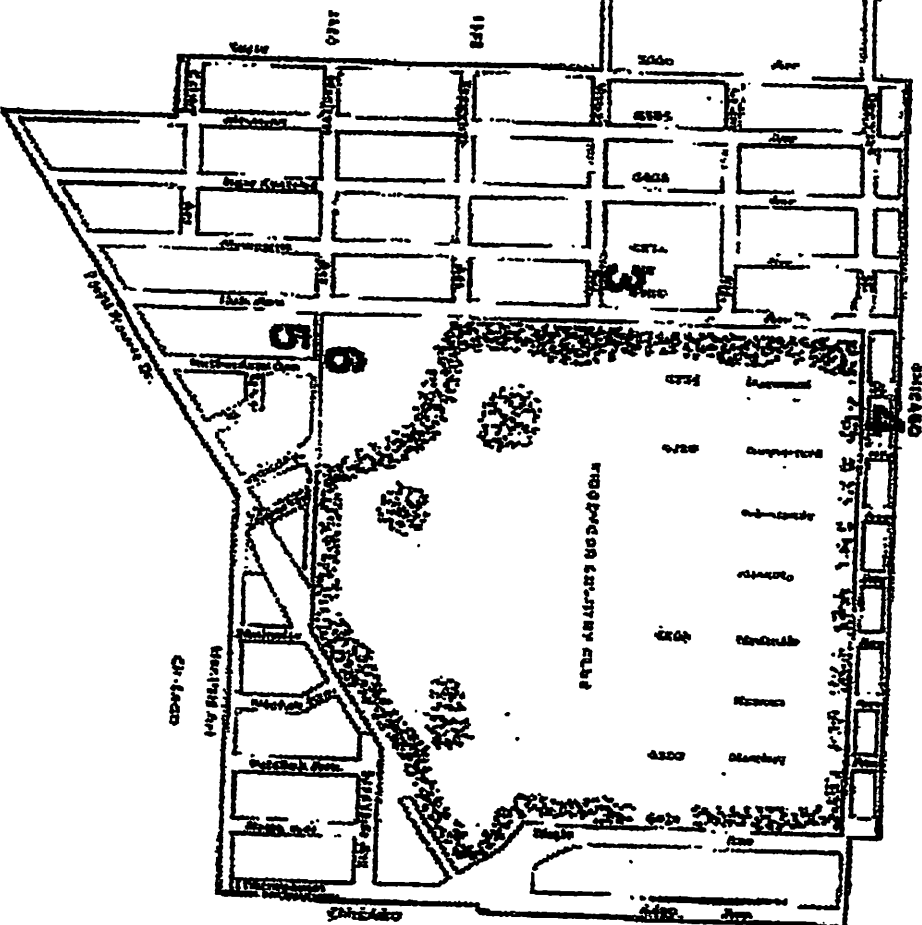
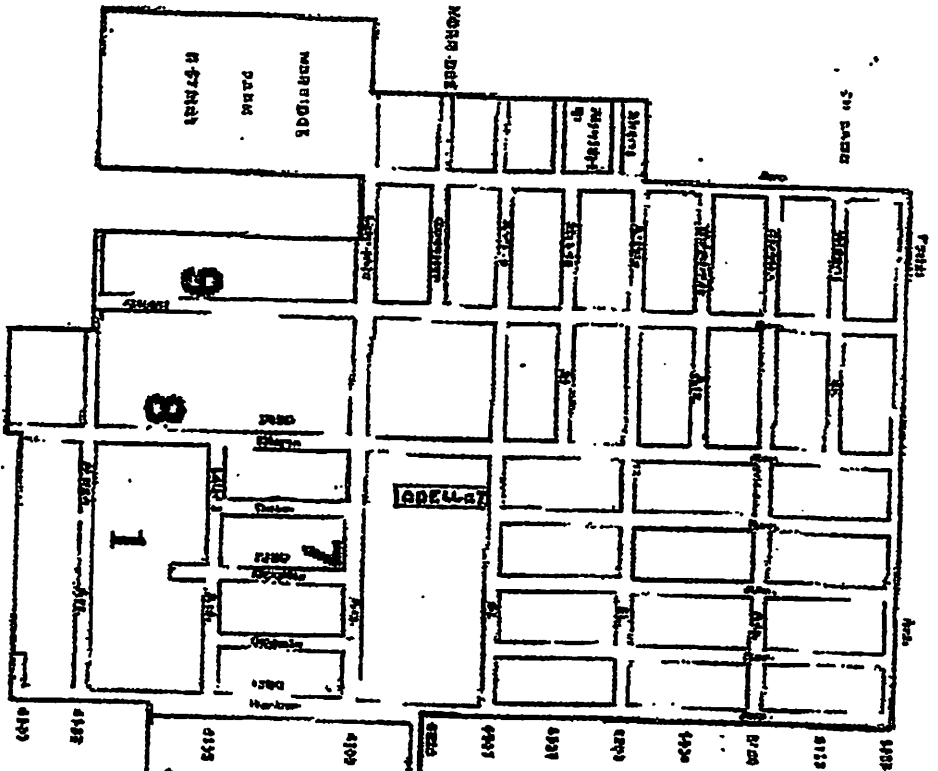
Activity	6/13.	8/14.	5/15.	5/16.
<b>A. Public Education and Outreach</b>				
A. 1 Distributed Paper Material				
Include storm water articles in quarterly newsletter	X			
Prepare information for industrial/commercial packets				
Distribute information sheets in industrial/commercial packets				
A. 1 Distributed Paper Material				
Continue Distributing calendar with lawn sprinkling requirements	X	X	X	X
A. 6 Other Public Education				
Acquire information for posting on website				
Post storm water related information on Village Website	X			
<b>B. Public Involvement and Participation</b>				
B. 4 Public Hearing				
Meet public notice requirements	X	X	X	X
B. 4 Public Hearing				
Hold public meeting to present NPDES Phase II Program				
Present ongoing program summary at annual public meeting	X	X	X	X
B. 5 Volunteer Monitoring				
Post Village Hall phone number for storm-related complaints	X	X	X	X
<b>C. Illicit Discharge Detection and Elimination</b>				
C. 1 Storm sewer map preparation				
Review existing storm sewer and outfall mapping	X	X	X	X
Compile as-built drawings	X	X	X	X
Begin updating storm sewer atlas and outfalls	X	X	X	X
C. 2 Regulatory Control Program				
Review existing ordinance language	X	X	X	X
Revise ordinance as needed	X	X	X	X
Adopt ordinance amendment				
Implement and enforce new ordinance provisions	X	X	X	X
C. 3 Detection/Elimination Prioritization Plan				
Develop policy and procedures for detection	X	X	X	X
Educate employees on new policy and procedures	X	X	X	X
C. 5 Illicit source removal procedures				
Notify citizens of West Central Municipal Conference on hazardous waste disposal	X	X	X	X
C. 7 Visual Dry Weather Screening				
Prioritize areas for dry weather screening				
Begin dry weather screening activities				
Continue dry weather screening activities	X			
C. 9 Public Notification				
Post info in newsletter about illicit discharges				
Post info on Village website about illicit discharges	X			
Distribute commercial/industrial informational packet				
<b>Construction Site Runoff Control</b>				
D. 1 Regulatory Control Program				
Develop an erosion control ordinance for sites > 1 acre				

Develop an erosion control ordinance for sites < 1 acre				
Adopt new/revised ordinance				
Implement and enforce new ordinance	X	X	X	X
<b>D. 2 Erosion and Sediment Control BMPs</b>				
Develop list of minimum BMPs				
Require and enforce new ordinance	X	X	X	X
<b>D. 4 Site Plan Review Procedures</b>				
Establish and document procedure for site plan review				
Continue revised procedures for site plan review	X	X	X	X
<b>D. 5 Public Information Handling Procedures</b>				
Publish public input phone number, establish documentation				
Continue to publish phone number for public input	X			
<b>D. 6 Site Inspections/Enforcement Procedures</b>				
Establish /document inspection guidelines, develop checklist				
Educate inspectors on proper inspection techniques	X	X	X	X
<b>D. 6 Site Inspections/Enforcement Procedures</b>				
Develop new ordinance for site inspection/enforcement				
Adopt new/revised ordinance				
Implement and enforce new ordinance	X	X	X	X
<b>E. Post-Construction Runoff Control</b>				
<b>E. 2 Regulatory Control Runoff</b>				
Develop new ordinance for control of post-construction run-off				
Adopt new/revised ordinance				
Implement and enforce new ordinance	X	X	X	X
<b>E. 3 Long Term O&amp;M Procedures</b>				
Inventory areas for needed & existing BMPs				
Update BMP maintenance schedule	X			
<b>E. 4 Pre-Construction Review of BMP Designs</b>				
Establish and document procedure for site plan review				
Continue revised procedures for site plan review	X	X	X	X
<b>E. 5 Site Inspections During Construction</b>				
Establish construction inspection guidelines, develop checklist	X	X	X	X
Educate inspectors on proper inspection techniques	X	X	X	X
<b>E. 6 Post Construction Inspections</b>				
Establish post-const. inspection guidelines, develop checklist				
Educate inspectors on proper inspection techniques	X	X	X	X
<b>F. Pollution Prevention/Good Housekeeping</b>				
<b>F. 1 Employee Training Program</b>				
Compile educational materials for municipal employees				
Conduct employee training sessions	X			
<b>F. 2 Inspection and Maintenance Program</b>				
Review schedule for catch basin cleaning and revise	X			
Continue catch basin cleaning program	X	X	X	X
<b>F. 2 Inspection and Maintenance Program</b>				
Review existing street sweeping program				
Continue street sweeping program	X	X	X	X
<b>F. 3 Muni Operations Storm Water Control</b>				
Inventory maintenance facilities and pollution prevention				
Determine and schedule upgrades at maintenance facilities	X	X	X	X
<b>F. 4 Muni Operations Waste Disposal</b>				

Inventory facilities that handle hazardous waste				
Create spill prevention plan and distribute to employees	X			
F. 6 Other Municipal Operations Controls				
Review and record existing salt storage procedures				
Evaluate salt storage and application options				
Make any changes necessary	X	X	X	X



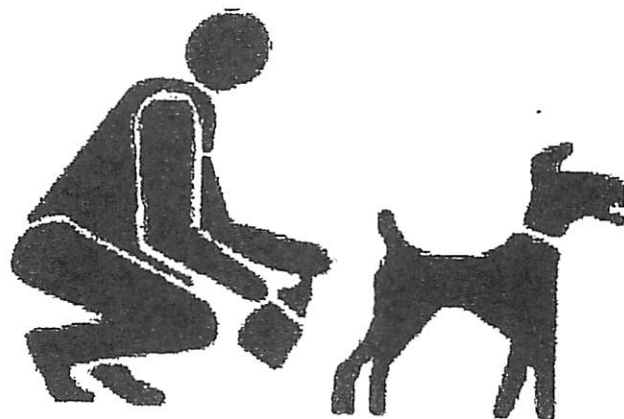
# THE VILLAGE of HARWOOD HEIGHTS 7300 West Wilson Avenue Harwood Heights, Illinois 60706 Telephone: 708-867-7200



1. Village Hall, Police Department, Business Offices
2. Water Reservoir, Public Works Office and Garage
3. Union Ridge School, School District #88
4. Church of the Open Door
5. Union Ridge Bible School
6. St. Rose's Catholic Church
7. Norwood Park Township Fire Station
8. Water Tower
9. Eisenhower Public Library



# Be Responsible!!!



## Please...Clean up after your dog.

Be proud to be seen picking up after your dog. Picking up shows pride in your community, in yourself, and in your dog. You set a great example for others, you keep our village clean and you help create a brighter future for dogs and their people.

### VILLAGE OF HARWOOD HEIGHTS - VILLAGE CODE 6.08.030, SECTION D- REMOVAL OF FECES

The owner of every animal shall be responsible for the removal and sanitary disposition of any feces deposited by his/her animal anywhere in the village. When accompanying the animal outside his/her property, the owner shall have on his/her person suitable means for the removal of such feces and a depository for the transmission of feces to a receptacle located upon property owned or possessed by such person. The legally blind which are being led outside of their property by a guide dog shall be exempt from this section. No dog, cat, or other animal shall be walked in an area where signs prohibit such action. Please respect your fellow residents and show common courtesy when walking your dog. Any person in violation will be ticketed.



## Specifications<sup>®</sup>

3N80

- PROJECT:** Stormwater Lift Station  
Oriole Avenue Pump Station  
Harwood Heights, Illinois
- Application:** Duplex Concrete Lift Station
- Model:** (2) Hydromatic Model S3SD300M3/4-4 Submersible Pump with 50' Length of cords.
- Capacity:** 137.5 GPM @ 25 FT. TDH with 3" discharge.
- Motor(s):** 3 HP, 1750 RPM, 460 Voltage, 3 Phase, 60 Hz., 1.2 S.F.
- Control:** (1) Mercury level switch with 50' cords.
- Control Panel:** Furnished  
Control panel to include magnetic starters, circuit breakers, run lights, H-O-A switches, electric alternator, panel disconnect switch, etms, heat & seal failure sensors, duplex convenience outlet all in a pole mounted enclosure.
- Alarm:** Alarm Light with Dim-Glow and Alarm Battery Back-Up.
- Basin:** 5'-0" dia. x 20'-0" deep Concrete with MTM Lift-Out System.  
(Concrete, Piping & Valves By Contractor)
- Accessories:** (1) Duplex Aluminum Wet Well Access Hatch Model APD300-24x38  
(2) 3" MTM Base/discharge Elbow Assembly  
(2) 3" MTM Sealing Flange Assembly  
(2) 20' Lengths of 3/16" Stainless Steel Lifting Chain  
(8) 10' Lengths of 1.5" Stainless Steel Guiderails  
(1) Duplex Set of Lower Guiderail Supports  
(1) Duplex Set of Intermediate Guiderail Supports  
(1) Duplex Set of Upper Guiderail Supports  
(1) Stainless Steel 4 Float Mounting Bracket  
(1) Stainless Steel Chain & 10 lb. Cast Iron Anchor Float Mounting System  
(1) Heat & Seal Failure Probes (per pump)



# Illinois Environmental Protection Agency

Bureau of Water • 1021 N. Grand Avenue E. • P.O. Box 19276 • Springfield • Illinois • 62794-9276

## Division of Water Pollution Control ANNUAL FACILITY INSPECTION REPORT

### for NPDES Permit for Storm Water Discharges from Separate Storm Sewer Systems (MS4)

This fillable form may be completed online, a copy saved locally, printed and signed before it is submitted to the Compliance Assurance Section at the above address. Complete each section of this report.

Report Period: From March, 2017 To March, 2018

Permit No. ILR40 00208

#### MS4 OPERATOR INFORMATION: (As it appears on the current permit)

Name: Village of Harwood Heights Mailing Address 1: 7300 W. Wilson Ave  
Mailing Address 2: County: Cook  
City: Harwood Heights State: IL Zip: 60706 Telephone: 708-867-7206  
Contact Person: George Assimakopoulos Email Address: george444@harwoodheights.org  
(Person responsible for Annual Report)

#### Name(s) of governmental entity(ies) in which MS4 is located: (As it appears on the current permit)

Village of Harwood Heights

#### THE FOLLOWING ITEMS MUST BE ADDRESSED.

A. Changes to best management practices (check appropriate BMP change(s) and attach information regarding change(s) to BMP and measurable goals.)

- |  |                          |   |                          |
|--|--------------------------|---|--------------------------|
| 1. Public Education and Outreach             | <input type="checkbox"/> | 4. Construction Site Runoff Control       | <input type="checkbox"/> |
| 2. Public Participation/Involvement          | <input type="checkbox"/> | 5. Post-Construction Runoff Control       | <input type="checkbox"/> |
| 3. Illicit Discharge Detection & Elimination | <input type="checkbox"/> | 6. Pollution Prevention/Good Housekeeping | <input type="checkbox"/> |

B. Attach the status of compliance with permit conditions, an assessment of the appropriateness of your identified best management practices and progress towards achieving the statutory goal of reducing the discharge of pollutants to the MEP, and your identified measurable goals for each of the minimum control measures.

C. Attach results of information collected and analyzed, including monitoring data, if any during the reporting period.

D. Attach a summary of the storm water activities you plan to undertake during the next reporting cycle (including an implementation schedule.)

E. Attach notice that you are relying on another government entity to satisfy some of your permit obligations (if applicable).

F. Attach a list of construction projects that your entity has paid for during the reporting period.

Any person who knowingly makes a false, fictitious, or fraudulent material statement, orally or in writing, to the Illinois EPA commits a Class 4 felony. A second or subsequent offense after conviction is a Class 3 felony. (415 ILCS 5/44(h))

Owner Signature:

George Assimakopoulos

Printed Name:

7-6-17

Date:

Sewer & Water Foreman

Title:

EMAIL COMPLETED FORM TO: [epa.ms4annualinsp@illinois.gov](mailto:epa.ms4annualinsp@illinois.gov)

or Mail to: ILLINOIS ENVIRONMENTAL PROTECTION AGENCY

WATER POLLUTION CONTROL  
COMPLIANCE ASSURANCE SECTION #19  
1021 NORTH GRAND AVENUE EAST  
POST OFFICE BOX 19276  
SPRINGFIELD, ILLINOIS 62794-9276



**The Village of  
Harwood  
Heights**

*Dedicated to Serving People with Pride*

**Mayor  
ARLENE C. JEZIERNY**

**Village Clerk  
MARCIA L. FOLLOWY**

**Trustees  
MARK DOBRZYCKI  
MICHAEL J. GADZINSKI  
DEMETRIOS MOUGOLIAS  
THERESE SCHUEPFER  
LAWRENCE R. STEINER  
LESTER SZLENDAK**

**Dear Allan Keller:**

**The Village of Harwood Heights is requesting a waiver for the MS4 NPDES Phase II Storm Water Program. The population in our community is only 8,661. Our permit # is ILR4010208. If there is any question please feel free to call me at 708-867-7200**

**Thank you,**

**George Assimakopoulos**

**Village of Harwood Hts.**



The Village of  
**Harwood  
Heights**

Dedicated to Serving People with Pride

**September 7, 2017**

**Illinois EPA  
Pollution Control  
1021 North Grand Avenue East  
P.O. Box 19276  
Springfield, IL. 62794-9276**

**Re: Annual Facility Inspection Report  
NPDES Permit for Storm Water Discharges**

**Enclosed you will find Annual Facility Inspection for the period March  
2017 to March 2018.**

**Sincerely,**



**George Assimakopoulos.  
Village Of Harwood Heights**

**Mayer  
ARLENE C. JEZIERNY**

**Village Clerk  
MARCIA L. POLLOWY**

**Trustees  
ANNETTE BRZEZNIAK-VOLPE  
ANNA BRZUZOWSKI WEGRECKI  
JEFFREY A. BASCHE  
THERESE SCHUEPFER  
LAWRENCE R. STEINER  
GIUSEPPE S. ZERILLO**

# Village of Harwood Heights

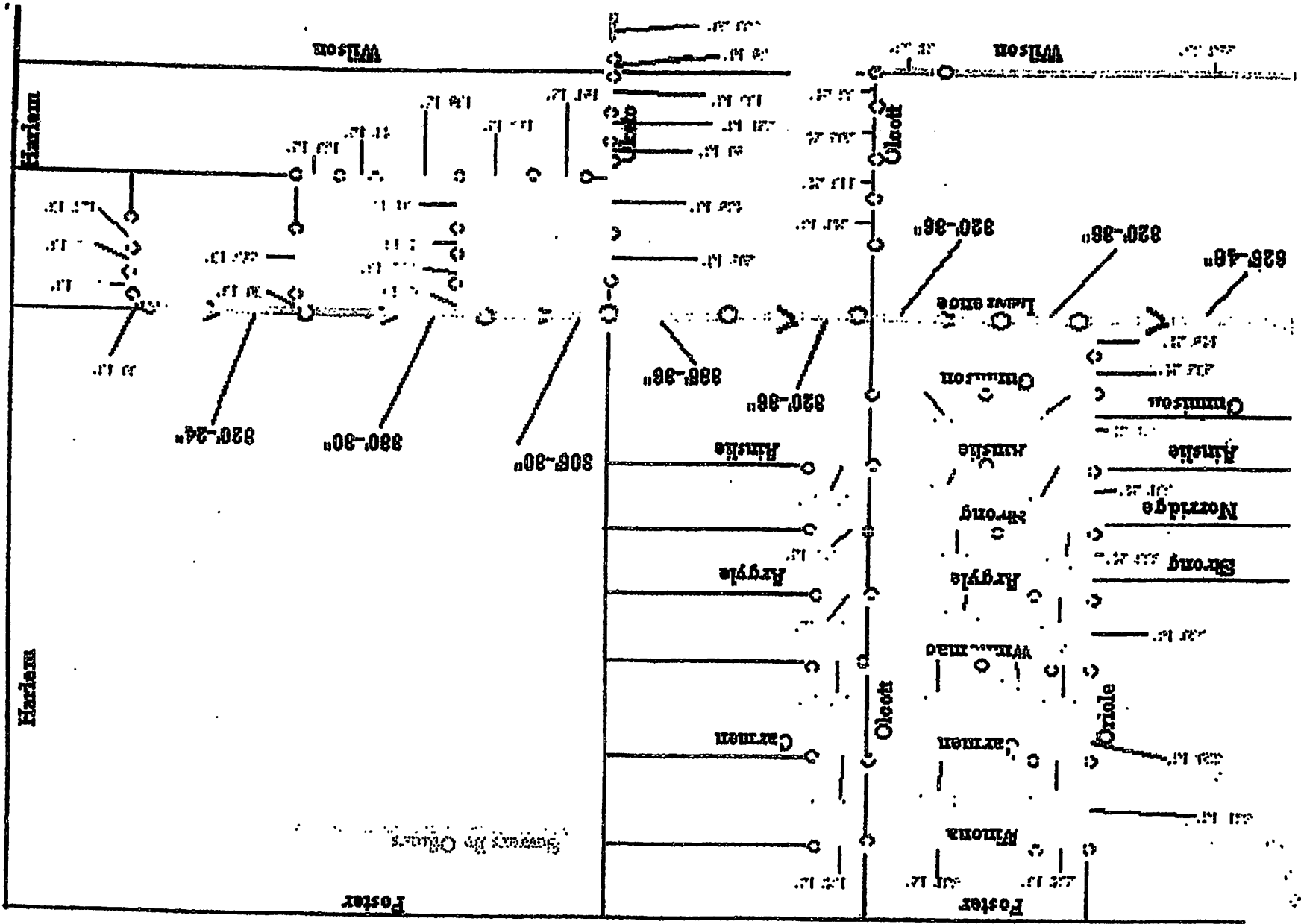
## NPDES Phase 11

### National Pollutant Discharge Elimination System

Activity	5/15.	5/16.	17-Sep
<b>A. Public Education and Outreach</b>			
A. 1 Distributed Paper Material			
Include storm water articles in quarterly newsletter			
Prepare information for industrial/commercial packets			
Distribute information sheets in industrial/commercial packets			
A. 1 Distributed Paper Material			
Continue Distributing calendar with lawn sprinkling requirements	X	X	X
A. 6 Other Public Education			
Acquire information for posting on website			
Post storm water related information on Village Website			
<b>B. Public Involvement and Participation</b>			
B. 4 Public Hearing			
Meet public notice requirements	X	X	X
B. 4 Public Hearing			
Hold public meeting to present NPDES Phase II Program			
Present ongoing program summary at annual public meeting	X	X	X
B. 5 Volunteer Monitoring			
Post Village Hall phone number for storm-related complaints	X	X	X
<b>C. Illicit Discharge Detection and Elimination</b>			
C. 1 Storm sewer map preparation			
Review existing storm sewer and outfall mapping	X	X	X
Compile as-built drawings	X	X	X
Begin updating storm sewer atlas and outfalls	X	X	X
C. 2 Regulatory Control Program			
Review existing ordinance language	X	X	X
Revise ordinance as needed	X	X	X
Adopt ordinance amendment			
Implement and enforce new ordinance provisions	X	X	X
C. 3 Detection/Elimination Prioritization Plan			
Develop policy and procedures for detection	X	X	X
Educate employees on new policy and procedures	X	X	X
C. 5 Illicit source removal procedures			
Notify citizens of West Central Municipal Conference on hazardous waste disposal	X	X	X
C. 7 Visual Dry Weather Screening			
Prioritize areas for dry weather screening			
Begin dry weather screening activities			
Continue dry weather screening activities			
C. 9 Public Notification			
Post info in newsletter about illicit discharges			
Post info on Village website about illicit discharges			
Distribute commercial/industrial informational packet			
<b>Construction Site Runoff Control</b>			
D. 1 Regulatory Control Program			
Develop an erosion control ordinance for sites > 1 acre			

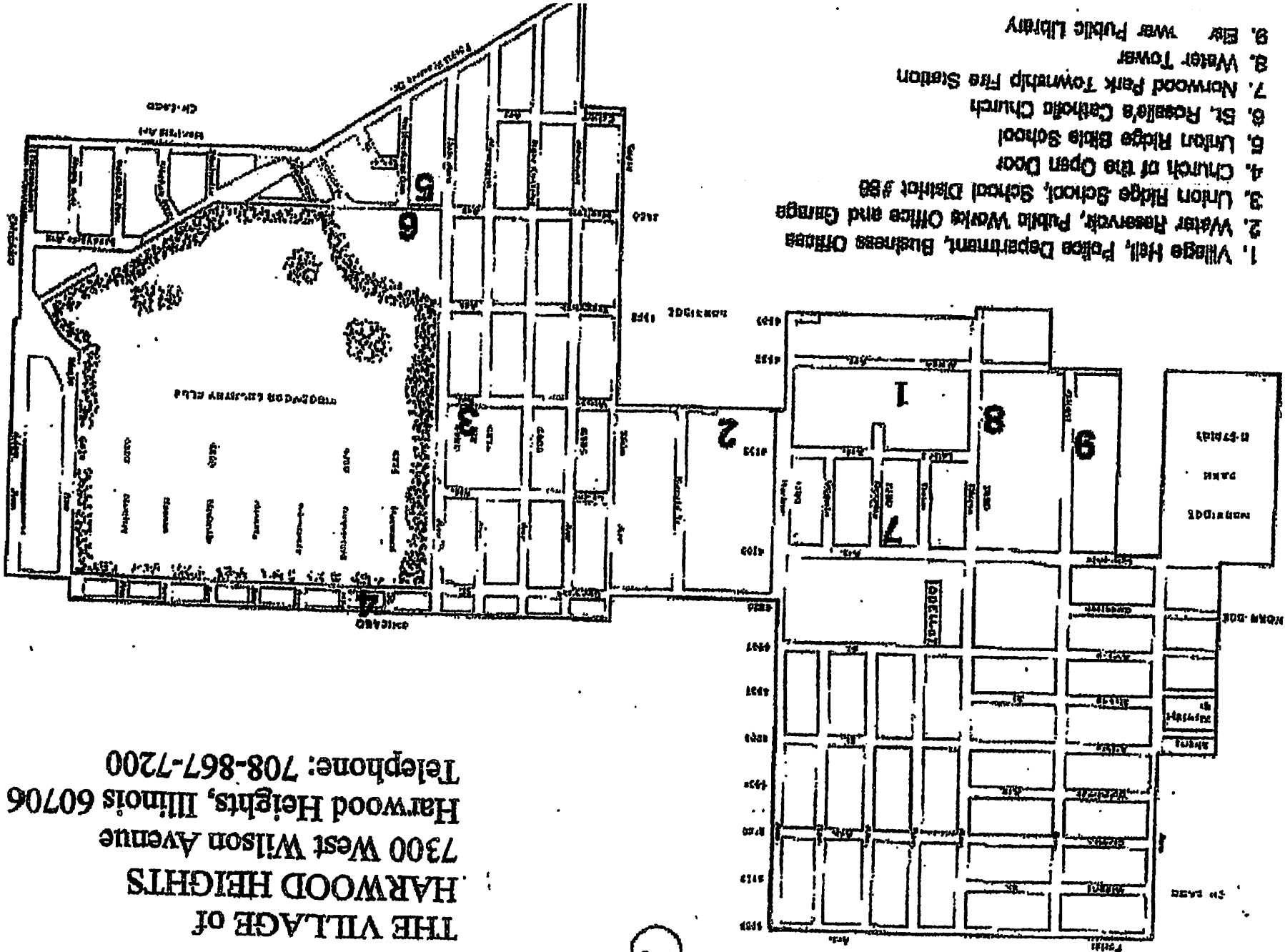
Develop an erosion control ordinance for sites < 1 acre			
Adopt new/revised ordinance			
Implement and enforce new ordinance	X	X	X
<b>D. 2 Erosion and Sediment Control BMPs</b>			
Develop list of minimum BMPs			
Require and enforce new ordinance	X	X	X
<b>D. 4 Site Plan Review Procedures</b>			
Establish and document procedure for site plan review			
Continue revised procedures for site plan review	X	X	X
<b>D. 5 Public Information Handling Procedures</b>			
Publish public input phone number, establish documentation			
Continue to publish phone number for public input			
<b>D. 6 Site Inspections/Enforcement Procedures</b>			
Establish /document inspection guidelines, develop checklist			
Educate inspectors on proper inspection techniques	X	X	X
<b>D. 6 Site Inspections/Enforcement Procedures</b>			
Develop new ordinance for site inspection/enforcement			
Adopt new/revised ordinance			
Implement and enforce new ordinance	X	X	X
<b>E. Post-Construction Runoff Control</b>			
<b>E. 2 Regulatory Control Runoff</b>			
Develop new ordinance for control of post-construction run-off			
Adopt new/revised ordinance			
Implement and enforce new ordinance	X	X	X
<b>E. 3 Long Term O&amp;M Procedures</b>			
Inventory areas for needed & existing BMPs			
Update BMP maintenance schedule			
<b>E. 4 Pre-Construction Review of BMP Designs</b>			
Establish and document procedure for site plan review			
Continue revised procedures for site plan review	X	X	X
<b>E. 5 Site Inspections During Construction</b>			
Establish construction inspection guidelines, develop checklist	X	X	X
Educate inspectors on proper inspection techniques	X	X	X
<b>E. 6 Post Construction Inspections</b>			
Establish post-const. inspection guidelines, develop checklist			
Educate inspectors on proper inspection techniques	X	X	X
<b>F. Pollution Prevention/Good Housekeeping</b>			
<b>F. 1 Employee Training Program</b>			
Compile educational materials for municipal employees			
Conduct employee training sessions			
<b>F. 2 Inspection and Maintenance Program</b>			
Review schedule for catch basin cleaning and revise			
Continue catch basin cleaning program	X	X	X
<b>F. 2 Inspection and Maintenance Program</b>			
Review existing street sweeping program			
Continue street sweeping program	X	X	X
<b>F. 3 Muni Operations Storm Water Control</b>			
Inventory maintenance facilities and pollution prevention			
Determine and schedule upgrades at maintenance facilities	X	X	X
<b>F. 4 Muni Operations Waste Disposal</b>			

Inventory facilities that handle hazardous waste			
Create spill prevention plan and distribute to employees			
F. 6 Other Municipal Operations Controls			
Review and record existing salt storage procedures			
Evaluate salt storage and application options			
Make any changes necessary	X	X	X





# THE VILLAGE OF HARWOOD HEIGHTS 7300 West Wilson Avenue Harwood Heights, Illinois 60706 Telephone: 708-867-7200



# Be Responsible!!!



## Please...Clean up after your dog.

Be proud to be seen picking up after your dog. Picking up shows pride in your community, in yourself, and in your dog. You set a great example for others, you keep our village clean and you help create a brighter future for dogs and their people.

### VILLAGE OF HARWOOD HEIGHTS - VILLAGE CODE 6.08.030, SECTION D- REMOVAL OF FECES

The owner of every animal shall be responsible for the removal and sanitary disposition of any feces deposited by his/her animal anywhere in the village. When accompanying the animal outside his/her property, the owner shall have on his/her person suitable means for the removal of such feces and a depository for the transmission of feces to a receptacle located upon property owned or possessed by such person. The legally blind which are being led outside of their property by a guide dog shall be exempt from this section. No dog, cat, or other animal shall be walked in an area where signs prohibit such action. Please respect your fellow residents and show common courtesy when walking your dog. Any person in violation will be ticketed.



Copyright © 2004 Microsoft Corp. and/or its suppliers. All rights reserved. <http://www.microsoft.com/dna/>  
© Copyright 2004 Microsoft Corp. and/or its suppliers. All rights reserved. © 2004 Microsoft Corp. and/or its suppliers. All rights reserved. This data broker

Notation with permission from Canadian authorities © Her Majesty the Queen in Right of Canada.

A vertical scale bar with markings at 0 ml, 0.2, 0.4, 0.6, and 0.8.

- PROJECT:** Stormwater Lift Station  
Oriole Avenue Pump Station  
Harwood Heights, Illinois
- Application:** Duplex Concrete Lift Station
- Model:** (2) Hydromatic Model S3SD300M3/4-4 Submersible Pump with 50' Length of cords.
- Capacity:** 137.5 GPM @ 25 FT. TDH with 3" discharge.
- Motor(s):** 3 HP, 1750 RPM, 460 Voltage, 3 Phase, 60 Hz., 1.2 S.F.
- Control:** (1) Mercury level switch with 50' cords.
- Control Panel:** Furnished  
Control panel to include magnetic starters, circuit breakers, run lights, H-O-A switches, electric alternator, panel disconnect switch, etms, heat & seal failure sensors, duplex convenience outlet all in a pole mounted enclosure.
- Alarm:** Alarm Light with Dim-Glow and Alarm Battery Back-Up.
- Basin:** 5'-0" dia. x 20'-0" deep Concrete with MTM Lift-Out System.  
(Concrete, Piping & Valves By Contractor)
- Accessories:** (1) Duplex Aluminum Wet Well Access Hatch Model APD300-24x38  
(2) 3" MTM Base/discharge Elbow Assembly  
(2) 3" MTM Sealing Flange Assembly  
(2) 20' Lengths of 3/16" Stainless Steel Lifting Chain  
(8) 10' Lengths of 1.5" Stainless Steel Guiderails  
(1) Duplex Set of Lower Guiderail Supports  
(1) Duplex Set of Intermediate Guiderail Supports  
(1) Duplex Set of Upper Guiderail Supports  
(1) Stainless Steel 4 Float Mounting Bracket  
(1) Stainless Steel Chain & 10 lb. Cast Iron Anchor Float Mounting System  
(1) Heat & Seal Failure Probes (per pump)

**METROPOLITAN PUMP COMPANY**

*division of Metropolitan Industries, Inc.*

37 Forestwood Drive

Romeoville, Illinois 60446

phone: (815)886-9200 fax: (815)886-4573